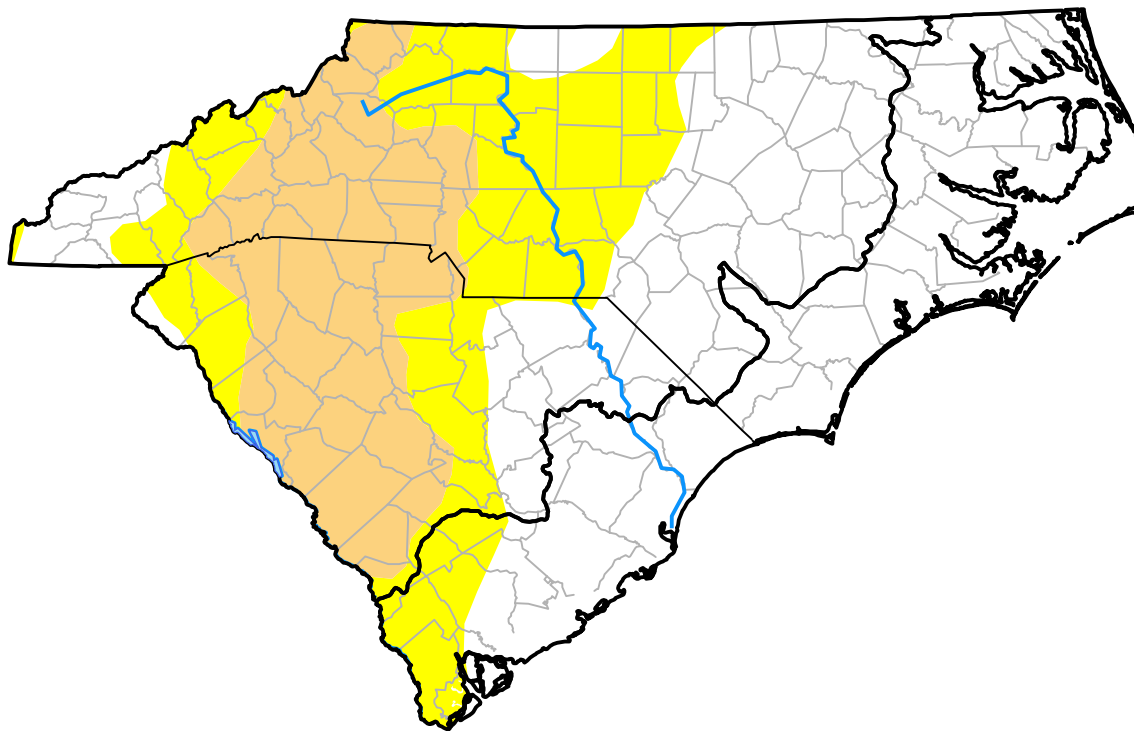


U.S. Drought Monitor

Coastal Carolinas RDEWS

October 26, 2010
 (Released Thursday, Oct. 28, 2010)
 Valid 8 a.m. EDT



Drought Conditions (Percent Area)

	None	D0-D4	D1-D4	D2-D4	D3-D4	D4
Current	91.11	8.89	0.00	0.00	0.00	0.00
Last Week <i>10-21-2010</i>	91.07	8.93	0.00	0.00	0.00	0.00
3 Months Ago <i>07-29-2010</i>	19.37	80.63	7.24	1.45	0.00	0.00
Start of Calendar Year <i>12-31-2009</i>	100.00	0.00	0.00	0.00	0.00	0.00
Start of Water Year <i>09-30-2010</i>	38.74	61.26	0.54	0.00	0.00	0.00
One Year Ago <i>10-29-2009</i>	73.55	26.45	1.97	0.00	0.00	0.00

Intensity:



The Drought Monitor focuses on broad-scale conditions. Local conditions may vary. For more information on the Drought Monitor, go to <https://droughtmonitor.unl.edu/About.aspx>

Author:

Eric Luebehusen
 U.S. Department of Agriculture



droughtmonitor.unl.edu