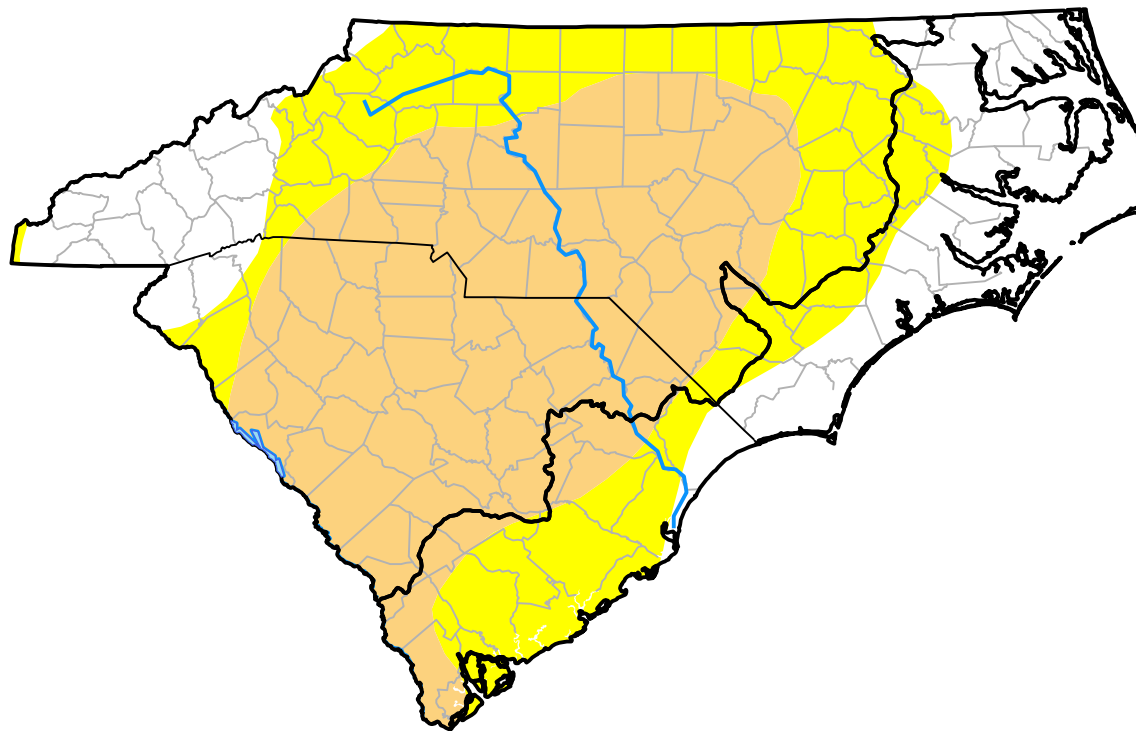


U.S. Drought Monitor

Coastal Carolinas RDEWS

January 11, 2011
 (Released Thursday, Jan. 13, 2011)
 Valid 7 a.m. EST



Drought Conditions (Percent Area)

	None	D0-D4	D1-D4	D2-D4	D3-D4	D4
Current	57.54	42.46	5.03	0.00	0.00	0.00
Last Week <i>01-06-2011</i>	57.54	42.46	4.77	0.00	0.00	0.00
3 Months Ago <i>10-14-2010</i>	91.07	8.93	0.00	0.00	0.00	0.00
Start of Calendar Year <i>01-06-2011</i>	57.54	42.46	4.77	0.00	0.00	0.00
Start of Water Year <i>09-30-2010</i>	38.74	61.26	0.54	0.00	0.00	0.00
One Year Ago <i>01-14-2010</i>	100.00	0.00	0.00	0.00	0.00	0.00

Intensity:



The Drought Monitor focuses on broad-scale conditions. Local conditions may vary. For more information on the Drought Monitor, go to <https://droughtmonitor.unl.edu/About.aspx>

Author:

Brian Fuchs
 National Drought Mitigation Center

