

U.S. Drought Monitor

Arkansas-White-Red Watershed

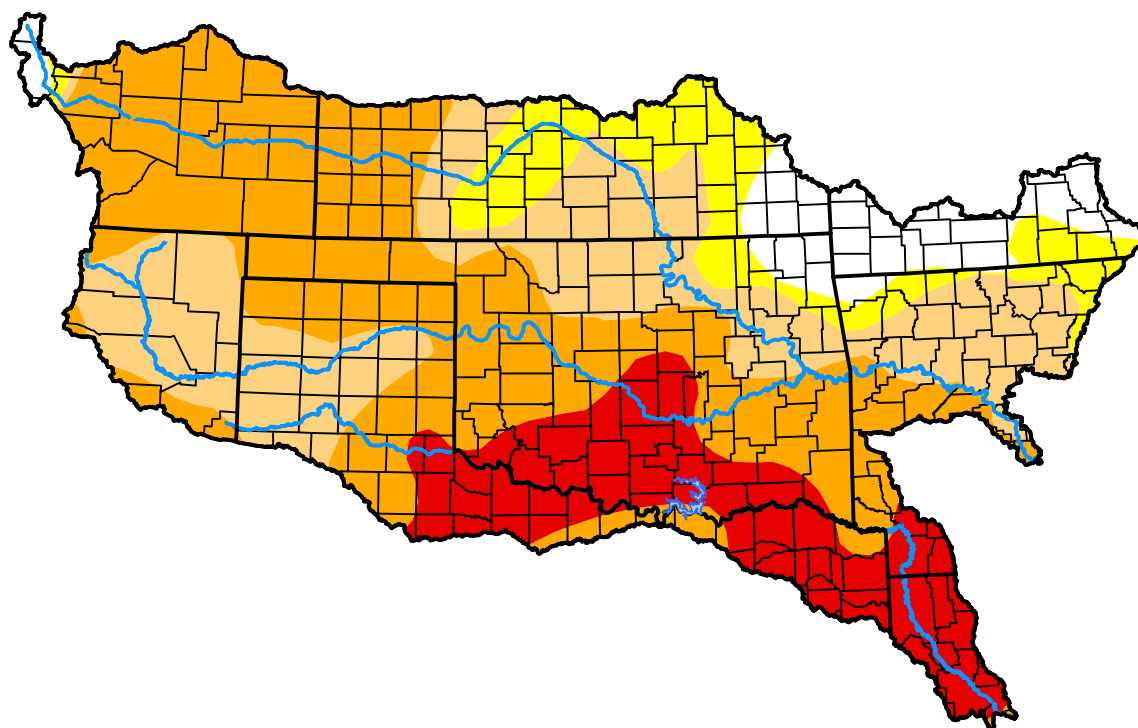
April 5, 2011

(Released Thursday, Apr. 7, 2011)

Valid 8 a.m. EDT

Drought Conditions (Percent Area)

	None	D0-D4	D1-D4	D2-D4	D3-D4	D4
Current	7.68	92.32	82.32	55.63	16.48	0.00
Last Week <i>03-31-2011</i>	6.80	93.20	80.34	54.54	12.87	0.00
3 Months Ago <i>01-06-2011</i>	17.23	82.77	32.89	13.60	3.97	0.00
Start of Calendar Year <i>01-06-2011</i>	17.23	82.77	32.89	13.60	3.97	0.00
Start of Water Year <i>09-30-2010</i>	61.40	38.60	6.75	2.72	0.65	0.00
One Year Ago <i>04-08-2010</i>	99.20	0.80	0.00	0.00	0.00	0.00



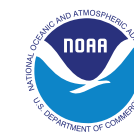
Intensity:



The Drought Monitor focuses on broad-scale conditions. Local conditions may vary. For more information on the Drought Monitor, go to <https://droughtmonitor.unl.edu/About.aspx>

Author:

Mark Svoboda
National Drought Mitigation Center



droughtmonitor.unl.edu