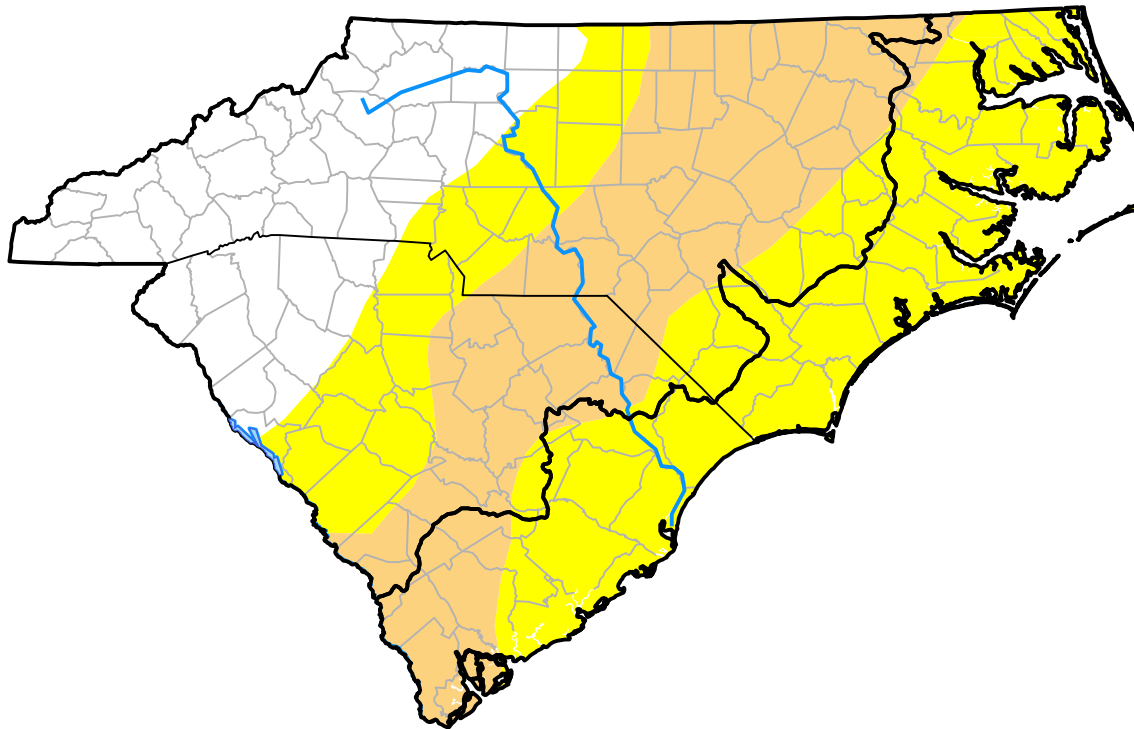


Carolinas RDEWS and Surrounding Areas

(Released Thursday, Apr. 7, 2011)
 10:00 a.m. EDT

Drought Conditions (Percent Area)

	None	D0-D4	D1-D4	D2-D4	D3-D4	D4
Current	25.11	74.89	32.15	0.00	0.00	0.00
Last Week <i>03-31-2011</i>	19.88	80.12	37.95	8.66	0.00	0.00
3 Months Ago <i>01-06-2011</i>	28.48	71.52	28.21	0.00	0.00	0.00
Start of Calendar Year <i>01-06-2011</i>	28.48	71.52	28.21	0.00	0.00	0.00
Start of Water Year <i>09-30-2010</i>	13.64	86.36	27.27	0.00	0.00	0.00
One Year Ago <i>04-08-2010</i>	100.00	0.00	0.00	0.00	0.00	0.00



Intensity:

- None
- D0 Abnormally Dry
- D1 Moderate Drought
- D2 Severe Drought
- D3 Extreme Drought
- D4 Exceptional Drought

The Drought Monitor focuses on broad-scale conditions. Local conditions may vary. For more information on the Drought Monitor, go to <https://droughtmonitor.unl.edu/About.aspx>

Author:

Mark Svoboda
 National Drought Mitigation Center

