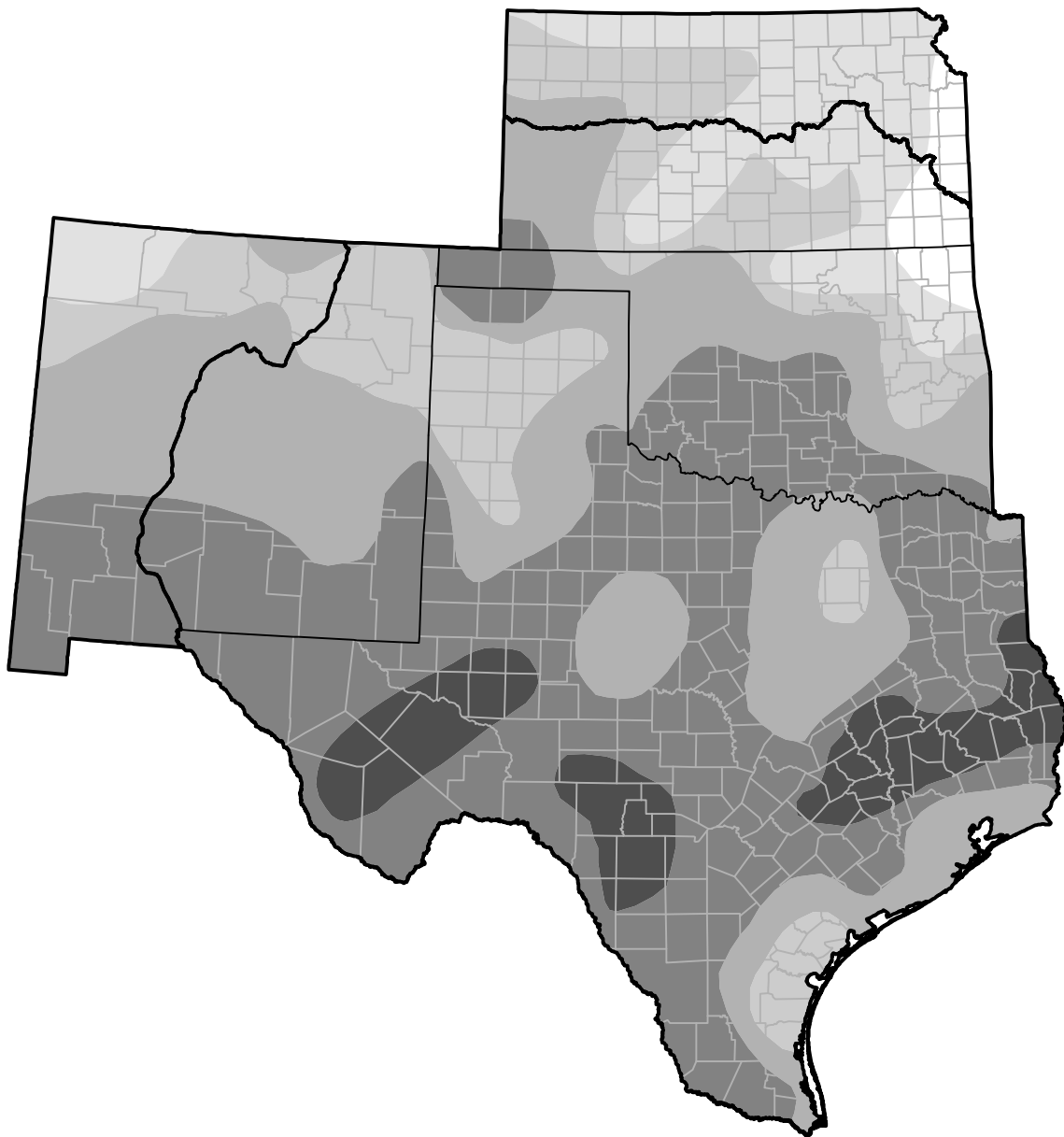


U.S. Drought Monitor

Southern Plains RDEWS

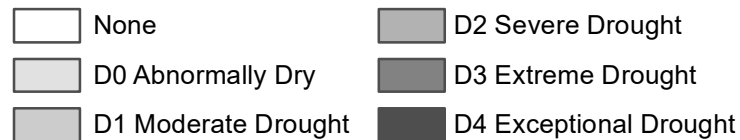
April 19, 2011
 (Released Thursday, Apr. 21, 2011)
 Valid 8 a.m. EDT



Drought Conditions (Percent Area)

	None	D0	D1	D2	D3	D4
Current	0.59	3.01	12.22	30.21	45.26	8.70
Last Week <i>04-14-2011</i>	0.59	4.21	14.49	32.98	41.92	5.83
3 Months Ago <i>01-20-2011</i>	15.85	34.62	33.81	11.48	4.24	0.00
Start of Calendar Year <i>01-06-2011</i>	10.90	37.69	30.04	13.79	7.57	0.00
Start of Water Year <i>09-30-2010</i>	74.44	23.51	1.48	0.57	0.00	0.00
One Year Ago <i>04-22-2010</i>	91.47	8.53	0.00	0.00	0.00	0.00

Intensity:



The Drought Monitor focuses on broad-scale conditions. Local conditions may vary. For more information on the Drought Monitor, go to <https://droughtmonitor.unl.edu/About.aspx>

Author:

Michael Brewer
 NCEI/NOAA

