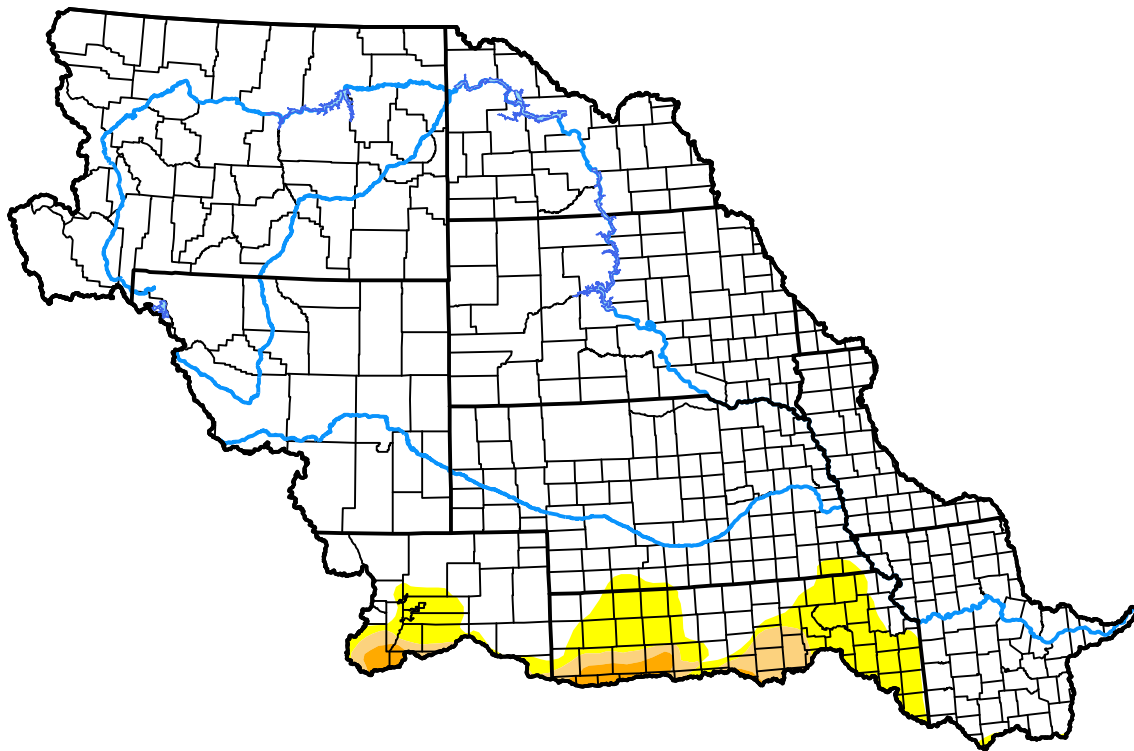


# U.S. Drought Monitor

## Missouri Watershed

**July 5, 2011**  
 (Released Thursday, Jul. 7, 2011)  
 Valid 8 a.m. EDT



*Drought Conditions (Percent Area)*

	None	D0	D1	D2	D3	D4
<b>Current</b>	92.44	5.41	1.48	0.67	0.00	0.00
<b>Last Week</b> <i>06-30-2011</i>	93.46	4.40	1.47	0.67	0.00	0.00
<b>3 Months Ago</b> <i>04-07-2011</i>	76.60	12.24	7.50	3.67	0.00	0.00
<b>Start of Calendar Year</b> <i>01-06-2011</i>	74.62	17.42	7.82	0.15	0.00	0.00
<b>Start of Water Year</b> <i>09-30-2010</i>	80.53	17.05	2.42	0.00	0.00	0.00
<b>One Year Ago</b> <i>07-08-2010</i>	97.23	2.46	0.30	0.00	0.00	0.00

***Intensity:***

- None
- D0 Abnormally Dry
- D1 Moderate Drought
- D2 Severe Drought
- D3 Extreme Drought
- D4 Exceptional Drought

*The Drought Monitor focuses on broad-scale conditions. Local conditions may vary. For more information on the Drought Monitor, go to <https://droughtmonitor.unl.edu/About.aspx>*

***Author:***

Richard Heim  
 NCEI/NOAA

