

U.S. Drought Monitor

Arkansas-White-Red Watershed

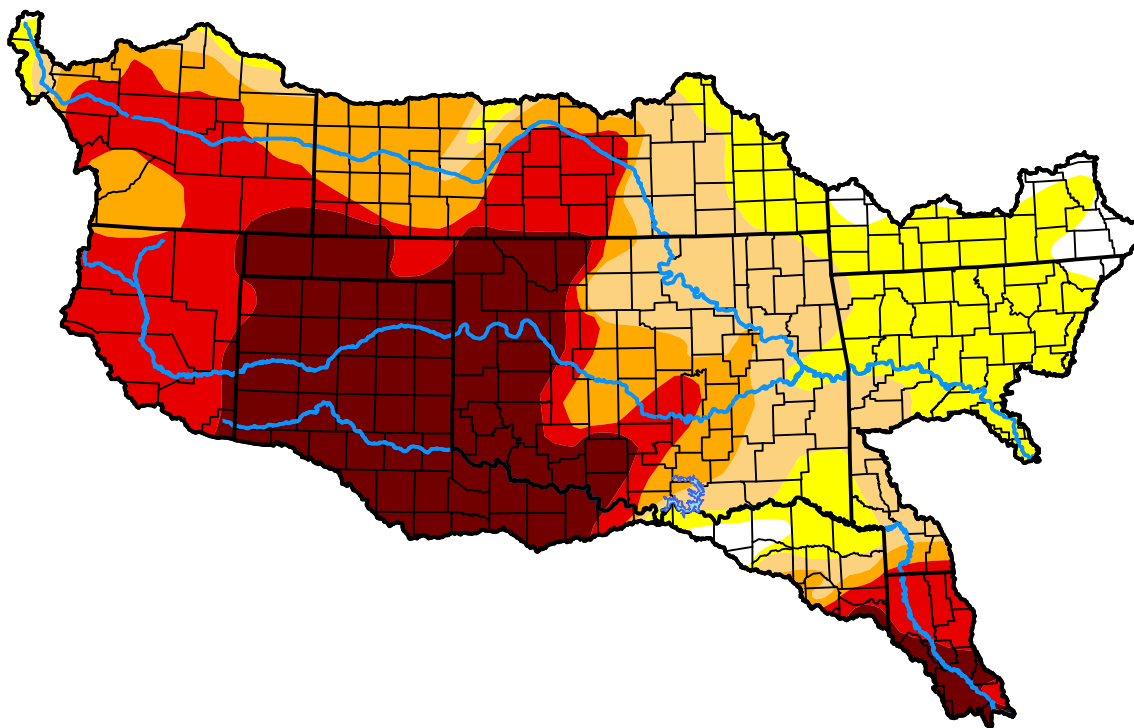
July 5, 2011

(Released Thursday, Jul. 7, 2011)

Valid 8 a.m. EDT

Drought Conditions (Percent Area)

	None	D0	D1	D2	D3	D4
Current	2.65	18.30	16.77	15.41	21.34	25.53
Last Week <i>06-30-2011</i>	4.26	23.89	10.84	14.94	21.24	24.84
3 Months Ago <i>04-07-2011</i>	7.68	10.00	26.69	39.15	16.48	0.00
Start of Calendar Year <i>01-06-2011</i>	17.23	49.88	19.29	9.63	3.97	0.00
Start of Water Year <i>09-30-2010</i>	61.40	31.85	4.03	2.07	0.65	0.00
One Year Ago <i>07-08-2010</i>	85.32	7.22	4.68	1.98	0.80	0.00



Intensity:



The Drought Monitor focuses on broad-scale conditions. Local conditions may vary. For more information on the Drought Monitor, go to <https://droughtmonitor.unl.edu/About.aspx>

Author:

Richard Heim
NCEI/NOAA



droughtmonitor.unl.edu