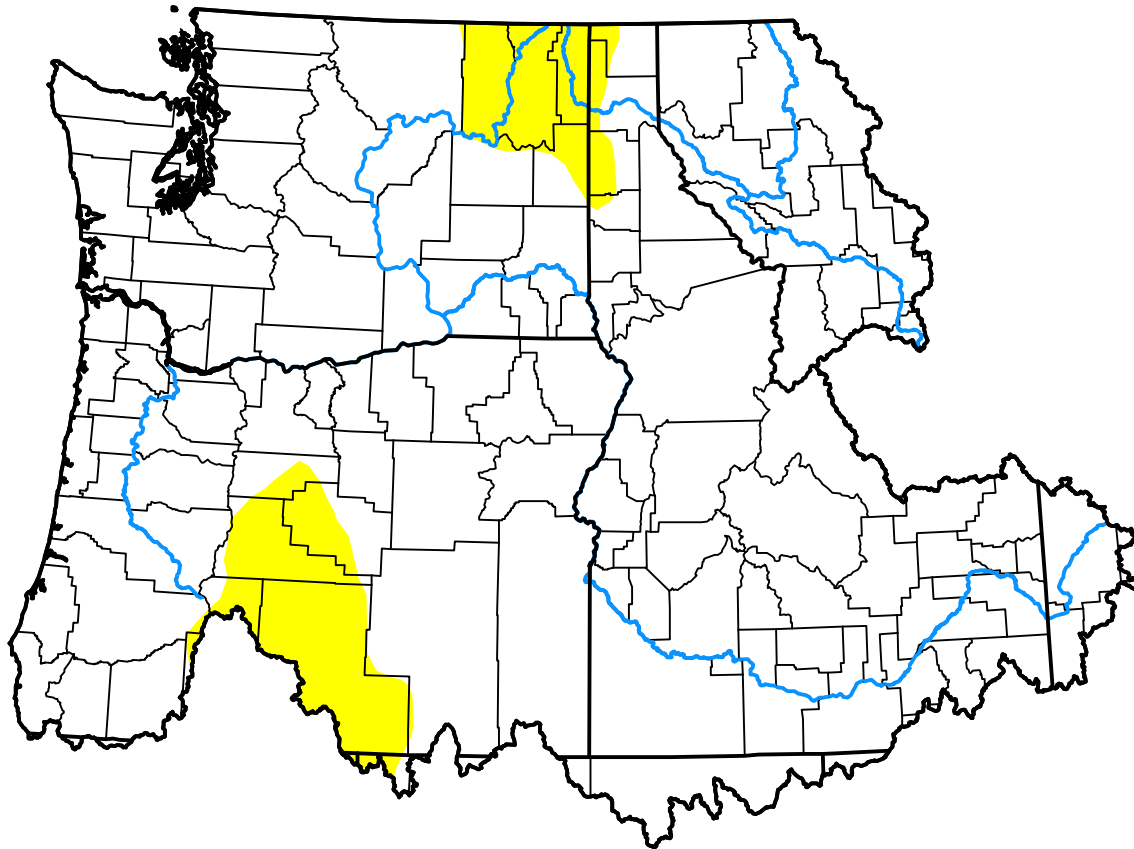


# U.S. Drought Monitor

## Pacific Northwest Watershed

**November 8, 2011**  
 (Released Thursday, Nov. 10, 2011)  
 Valid 7 a.m. EST



*Drought Conditions (Percent Area)*

	None	D0-D4	D1-D4	D2-D4	D3-D4	D4
<b>Current</b>	91.85	8.15	0.00	0.00	0.00	0.00
<b>Last Week</b> <i>11-03-2011</i>	98.40	1.60	0.00	0.00	0.00	0.00
<b>3 Months Ago</b> <i>08-11-2011</i>	100.00	0.00	0.00	0.00	0.00	0.00
<b>Start of Calendar Year</b> <i>01-06-2011</i>	99.94	0.06	0.00	0.00	0.00	0.00
<b>Start of Water Year</b> <i>09-29-2011</i>	89.09	10.91	0.00	0.00	0.00	0.00
<b>One Year Ago</b> <i>11-11-2010</i>	87.73	12.27	0.32	0.00	0.00	0.00

***Intensity:***

- None
- D0 Abnormally Dry
- D1 Moderate Drought
- D2 Severe Drought
- D3 Extreme Drought
- D4 Exceptional Drought

*The Drought Monitor focuses on broad-scale conditions. Local conditions may vary. For more information on the Drought Monitor, go to <https://droughtmonitor.unl.edu/About.aspx>*

***Author:***

Brian Fuchs  
 National Drought Mitigation Center

