

U.S. Drought Monitor

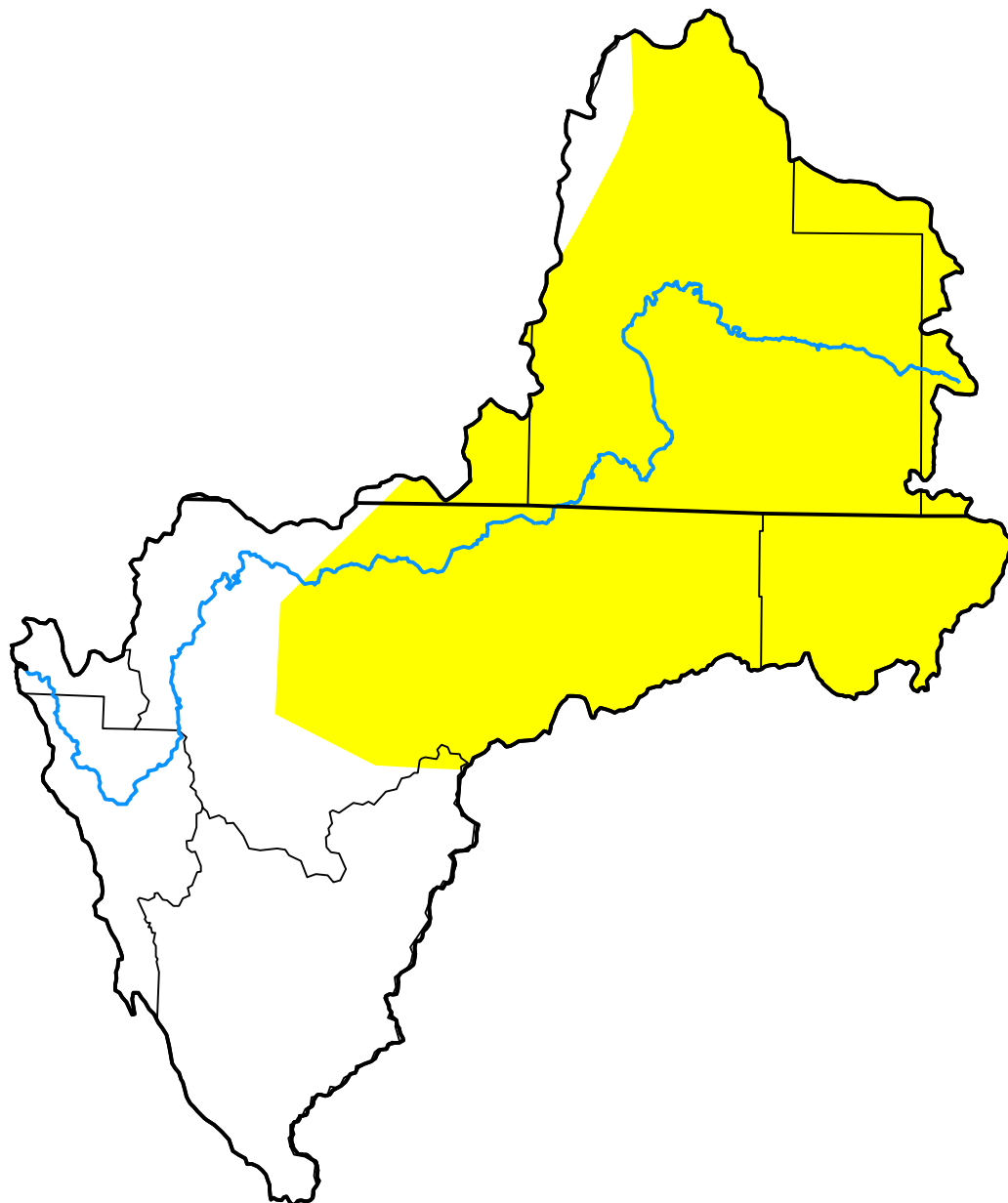
Klamath River Basin

December 13, 2011
 (Released Thursday, Dec. 15, 2011)

Valid 7 a.m. EST

Drought Conditions (Percent Area)

	None	D0	D1	D2	D3	D4
Current	36.83	63.17	0.00	0.00	0.00	0.00
Last Week <i>12-06-2011</i>	44.28	55.72	0.00	0.00	0.00	0.00
3 Months Ago <i>09-13-2011</i>	100.00	0.00	0.00	0.00	0.00	0.00
Start of Calendar Year <i>01-04-2011</i>	100.00	0.00	0.00	0.00	0.00	0.00
Start of Water Year <i>09-27-2011</i>	100.00	0.00	0.00	0.00	0.00	0.00
One Year Ago <i>12-14-2010</i>	81.68	18.32	0.00	0.00	0.00	0.00



Intensity:

- None
- D0 Abnormally Dry
- D1 Moderate Drought
- D2 Severe Drought
- D3 Extreme Drought
- D4 Exceptional Drought

The Drought Monitor focuses on broad-scale conditions. Local conditions may vary. For more information on the Drought Monitor, go to <https://droughtmonitor.unl.edu/About.aspx>

Author:

Matthew Rosencrans
 CPC/NCEP/NWS/NOAA



droughtmonitor.unl.edu