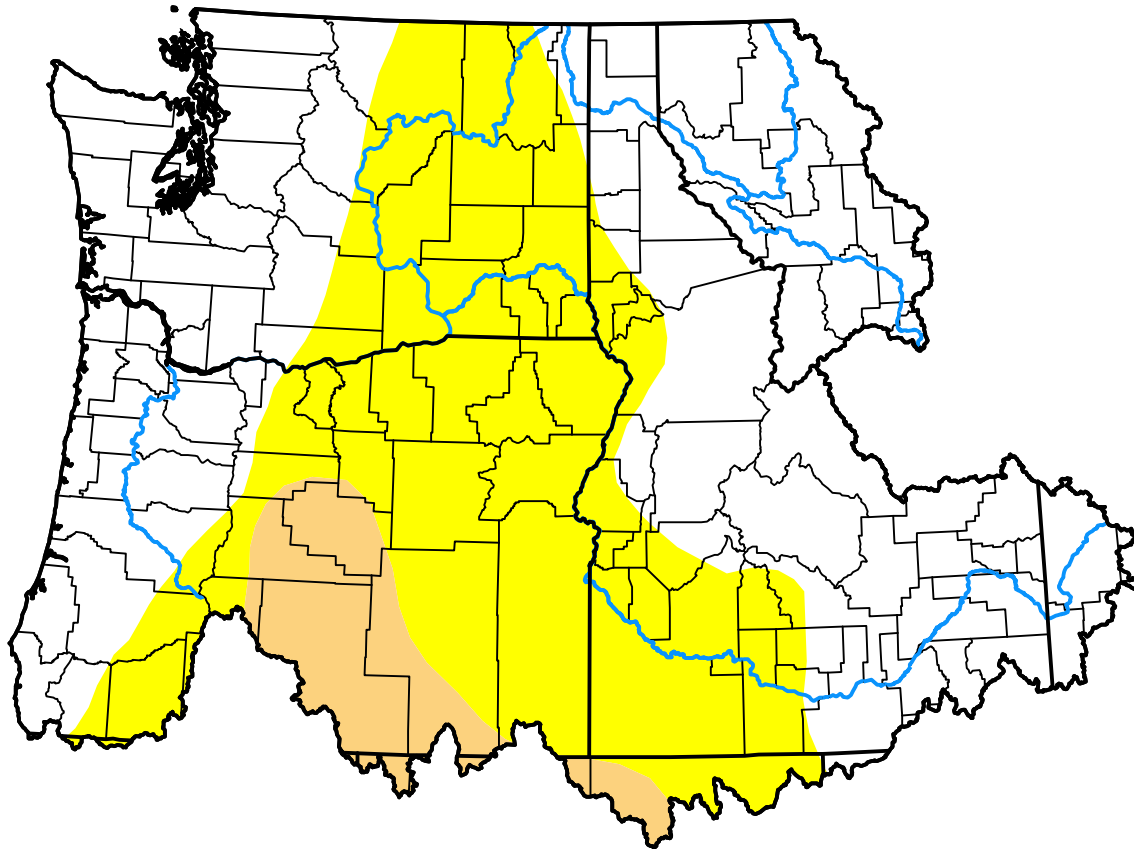


U.S. Drought Monitor

Pacific Northwest Watershed

January 3, 2012
 (Released Thursday, Jan. 5, 2012)
 Valid 7 a.m. EST



Drought Conditions (Percent Area)

	None	D0	D1	D2	D3	D4
Current	53.75	39.19	7.06	0.00	0.00	0.00
Last Week <i>12-29-2011</i>	38.82	54.45	6.73	0.00	0.00	0.00
3 Months Ago <i>10-06-2011</i>	89.09	10.91	0.00	0.00	0.00	0.00
Start of Calendar Year <i>01-05-2012</i>	53.75	39.19	7.06	0.00	0.00	0.00
Start of Water Year <i>09-29-2011</i>	89.09	10.91	0.00	0.00	0.00	0.00
One Year Ago <i>01-06-2011</i>	99.94	0.06	0.00	0.00	0.00	0.00

Intensity:

- None
- D0 Abnormally Dry
- D1 Moderate Drought
- D2 Severe Drought
- D3 Extreme Drought
- D4 Exceptional Drought

The Drought Monitor focuses on broad-scale conditions. Local conditions may vary. For more information on the Drought Monitor, go to <https://droughtmonitor.unl.edu/About.aspx>

Author:

Brad Rippey
 U.S. Department of Agriculture

