

U.S. Drought Monitor

Arkansas-White-Red Watershed

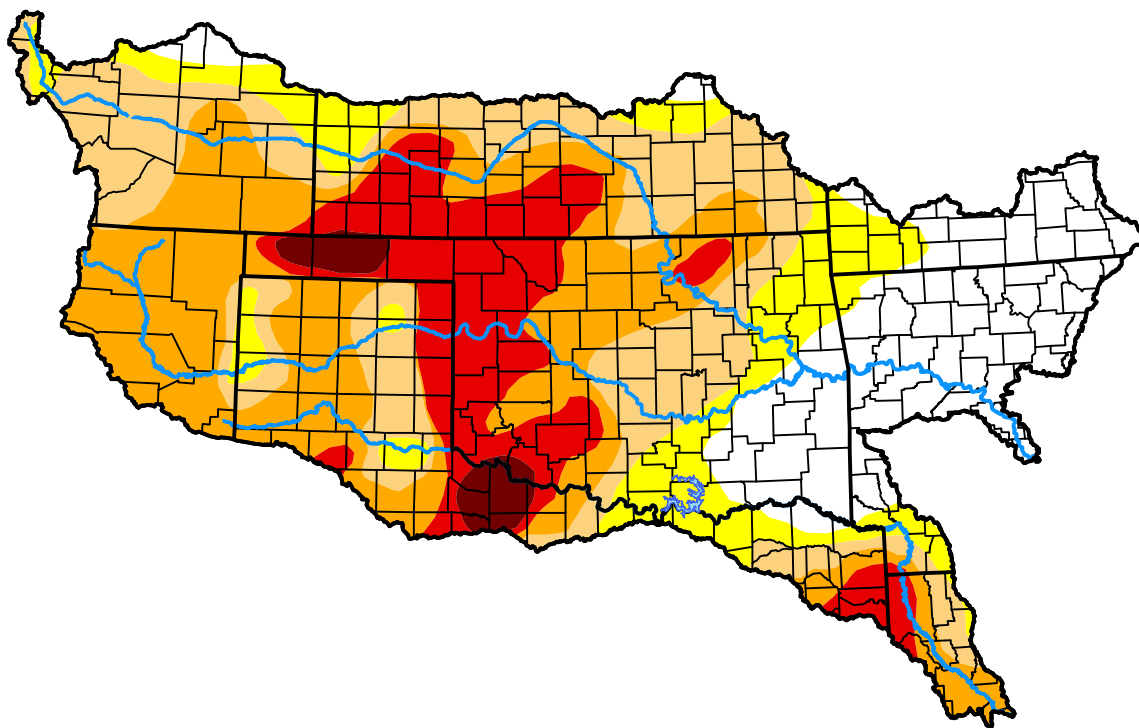
January 24, 2012

(Released Thursday, Jan. 26, 2012)

Valid 7 a.m. EST

Drought Conditions (Percent Area)

	None	D0	D1	D2	D3	D4
Current	19.51	13.27	22.98	27.13	14.94	2.17
Last Week <i>01-19-2012</i>	21.14	11.91	22.72	27.13	14.94	2.17
3 Months Ago <i>10-27-2011</i>	4.24	5.05	7.27	22.23	25.73	35.48
Start of Calendar Year <i>01-05-2012</i>	19.64	8.60	26.65	28.68	13.68	2.75
Start of Water Year <i>09-29-2011</i>	3.15	3.45	9.11	24.87	17.66	41.76
One Year Ago <i>01-27-2011</i>	11.65	33.35	39.19	12.51	3.29	0.00



Intensity:



The Drought Monitor focuses on broad-scale conditions. Local conditions may vary. For more information on the Drought Monitor, go to <https://droughtmonitor.unl.edu/About.aspx>

Author:

Eric Luebehusen
U.S. Department of Agriculture



droughtmonitor.unl.edu