

U.S. Drought Monitor

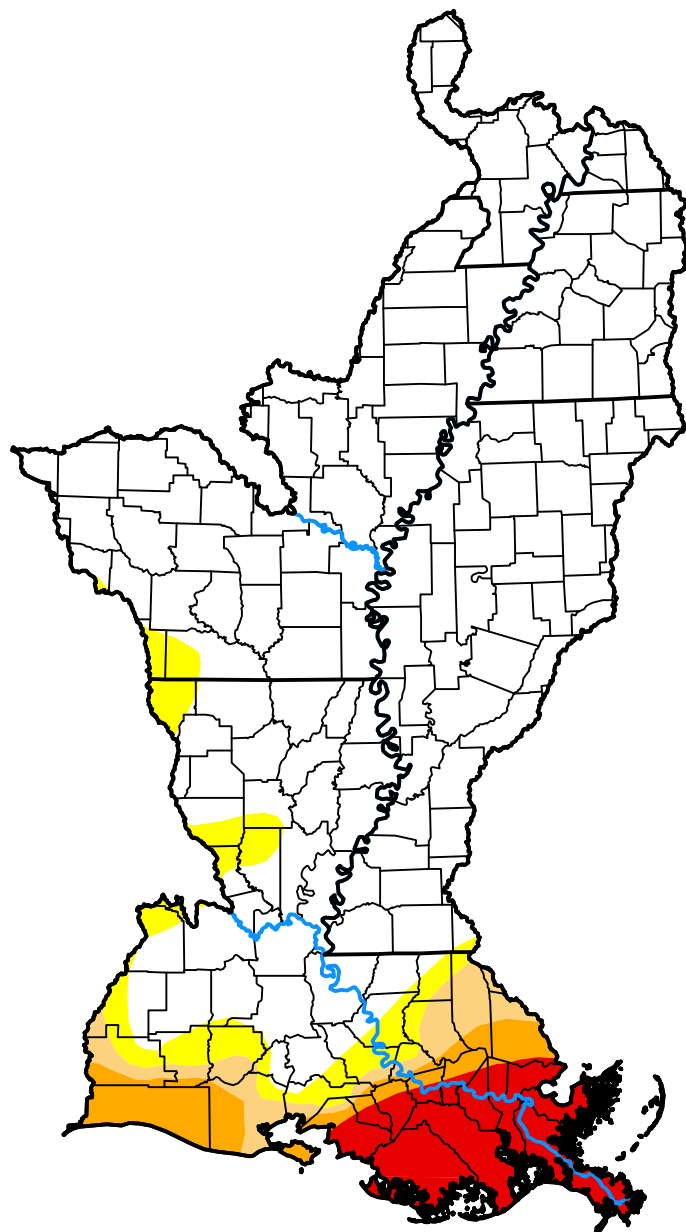
Lower Mississippi Watershed

February 14, 2012
 (Released Thursday, Feb. 16, 2012)

Valid 7 a.m. EST

Drought Conditions (Percent Area)

	None	D0	D1	D2	D3	D4
Current	80.36	5.77	3.25	4.00	6.63	0.00
Last Week <i>02-09-2012</i>	80.36	5.77	3.27	3.97	6.63	0.00
3 Months Ago <i>11-17-2011</i>	16.72	20.37	34.39	9.43	8.64	10.45
Start of Calendar Year <i>01-05-2012</i>	61.50	8.95	11.00	9.43	7.57	1.54
Start of Water Year <i>09-29-2011</i>	41.41	26.40	15.42	7.41	8.48	0.89
One Year Ago <i>02-17-2011</i>	3.92	25.83	31.97	31.67	6.61	0.00



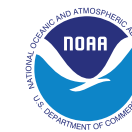
Intensity:

- None
- D0 Abnormally Dry
- D1 Moderate Drought
- D2 Severe Drought
- D3 Extreme Drought
- D4 Exceptional Drought

The Drought Monitor focuses on broad-scale conditions. Local conditions may vary. For more information on the Drought Monitor, go to <https://droughtmonitor.unl.edu/About.aspx>

Author:

Richard Tinker
 CPC/NOAA/NWS/NCEP



droughtmonitor.unl.edu