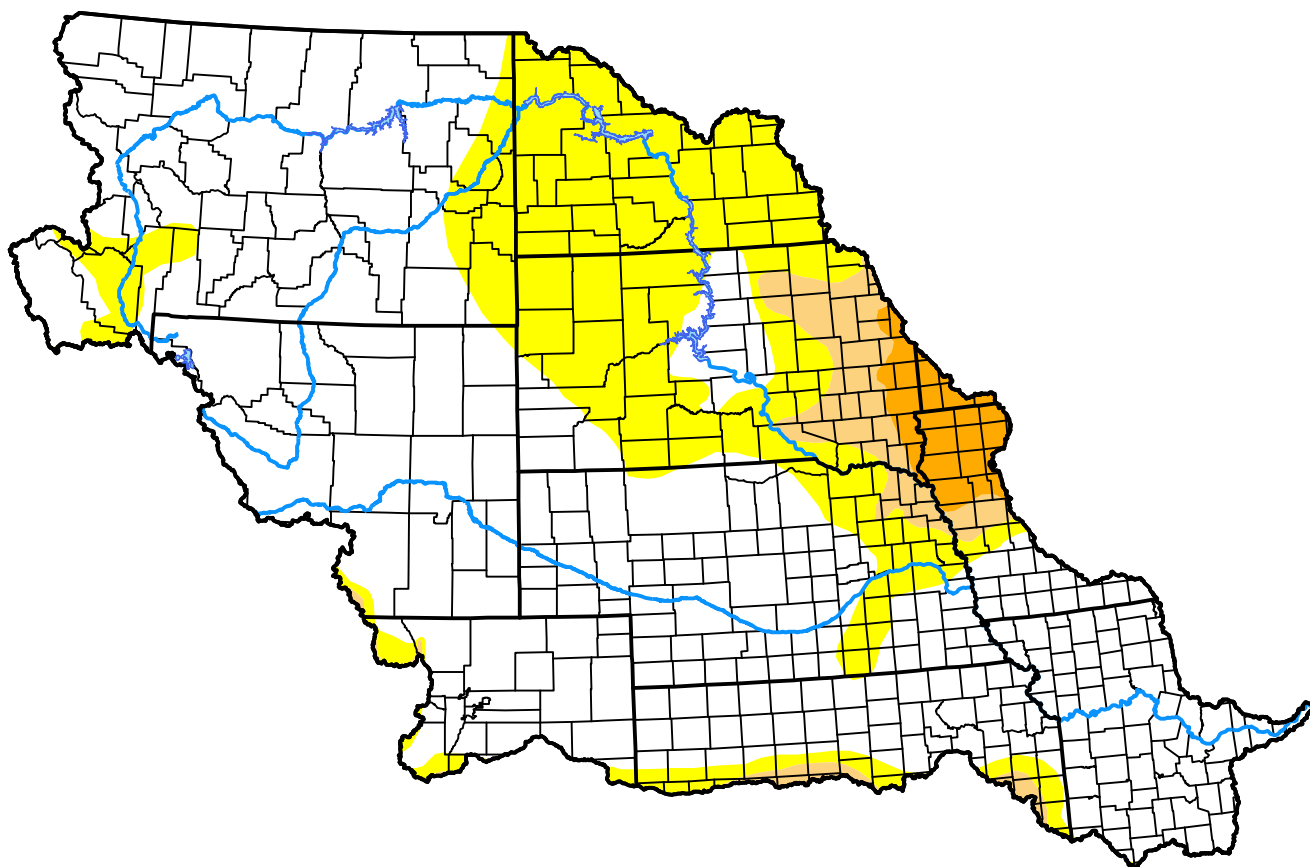
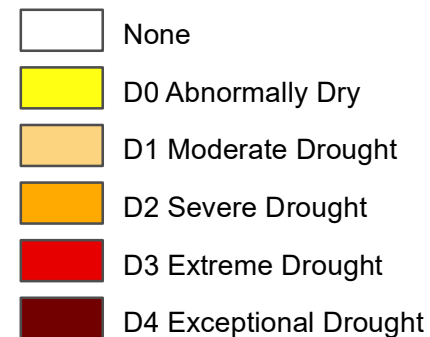


# U.S. Drought Monitor Missouri Watershed

**February 21, 2012**  
(Released Thursday, Feb. 23, 2012)  
Valid 7 a.m. EST



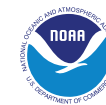
## Intensity:



*The Drought Monitor focuses on broad-scale conditions. Local conditions may vary. For more information on the Drought Monitor, go to <https://droughtmonitor.unl.edu/About.aspx>*

## Author:

Mark Svoboda  
National Drought Mitigation Center



**droughtmonitor.unl.edu**