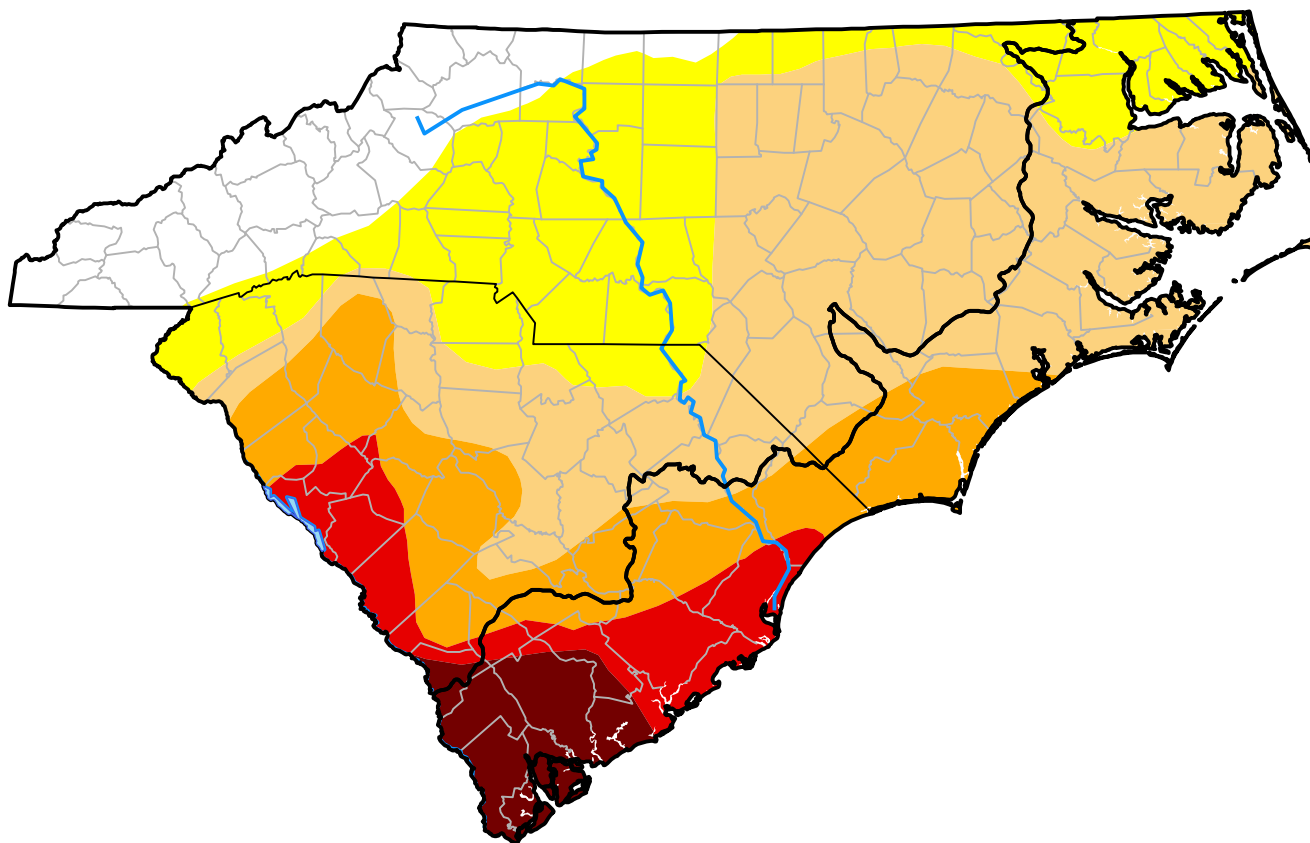


# U.S. Drought Monitor

## Coastal Carolinas RDEWS

**February 21, 2012**  
(Released Thursday, Feb. 23, 2012)  
Valid 7 a.m. EST



### Intensity:



*The Drought Monitor focuses on broad-scale conditions. Local conditions may vary. For more information on the Drought Monitor, go to <https://droughtmonitor.unl.edu/About.aspx>*

### Author:

Mark Svoboda  
National Drought Mitigation Center



[droughtmonitor.unl.edu](https://droughtmonitor.unl.edu)