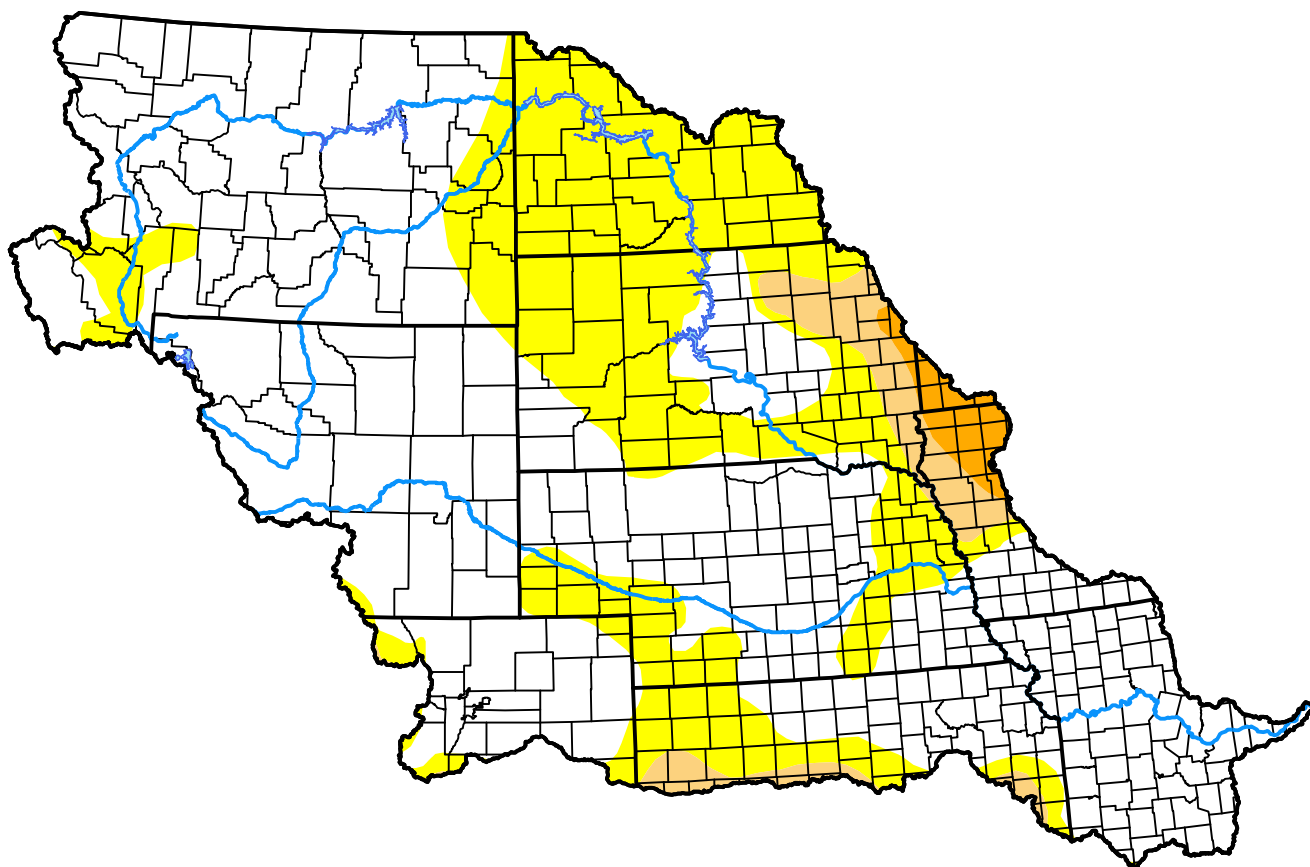


# U.S. Drought Monitor Missouri Watershed

**March 13, 2012**  
(Released Thursday, Mar. 15, 2012)  
Valid 8 a.m. EDT



## Intensity:



*The Drought Monitor focuses on broad-scale conditions. Local conditions may vary. For more information on the Drought Monitor, go to <https://droughtmonitor.unl.edu/About.aspx>*

## Author:

Michael Brewer  
NCEI/NOAA



**droughtmonitor.unl.edu**