

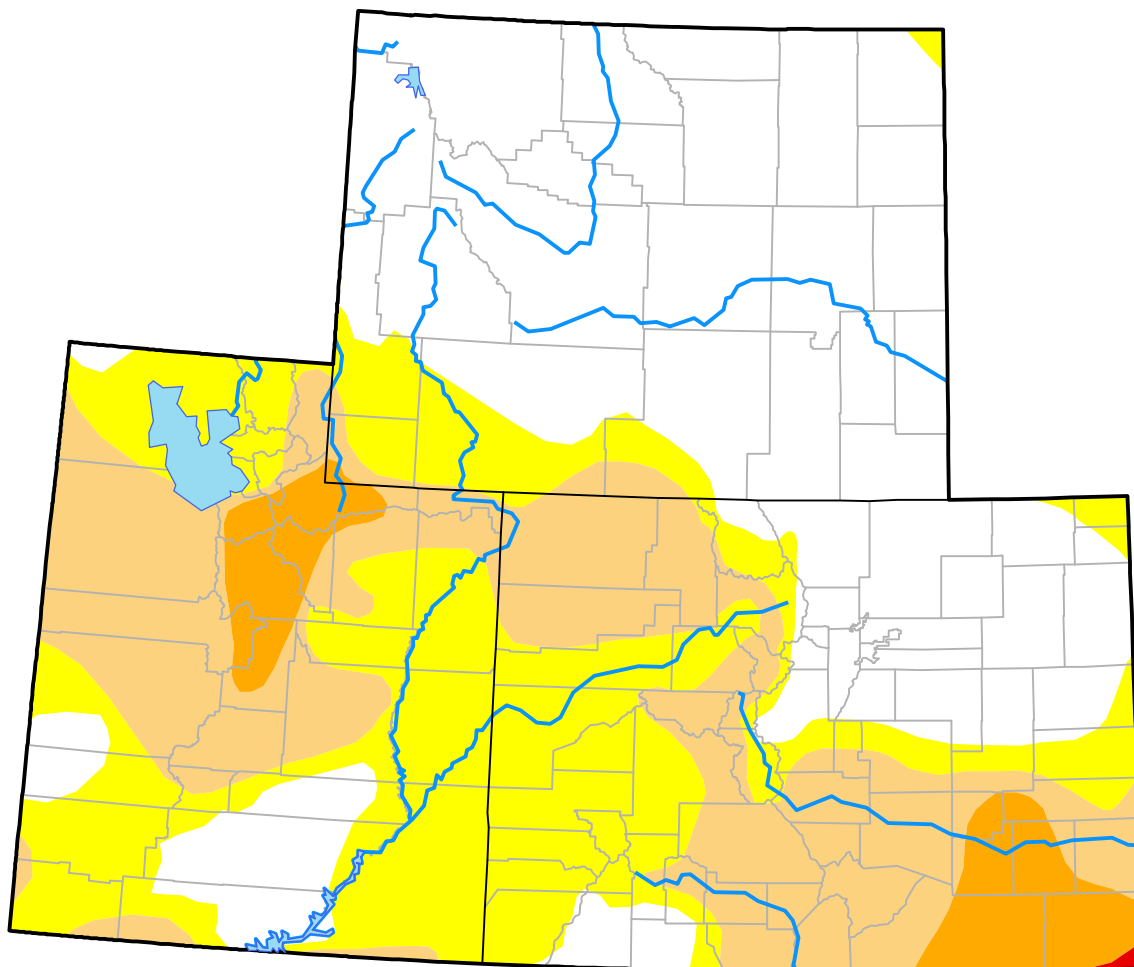
Upper Colorado River Basin RDEWS

(Released Thursday, Mar. 15, 2012)

Valid 8 a.m. EDT

Drought Conditions (Percent Area)

	None	D0-D4	D1-D4	D2-D4	D3-D4	D4
Current	44.15	55.85	28.43	5.15	0.08	0.00
Last Week <i>03-08-2012</i>	44.46	55.54	27.83	5.19	0.08	0.00
3 Months Ago <i>12-15-2011</i>	86.29	13.71	9.17	5.42	0.48	0.06
Start of Calendar Year <i>01-05-2012</i>	84.03	15.97	9.17	3.85	0.01	0.00
Start of Water Year <i>09-29-2011</i>	83.02	16.98	10.15	7.26	2.86	0.20
One Year Ago <i>03-17-2011</i>	71.62	28.38	18.70	12.83	0.00	0.00



Intensity:

- None
- D0 Abnormally Dry
- D1 Moderate Drought
- D2 Severe Drought
- D3 Extreme Drought
- D4 Exceptional Drought

The Drought Monitor focuses on broad-scale conditions. Local conditions may vary. For more information on the Drought Monitor, go to <https://droughtmonitor.unl.edu/About.aspx>

Author:

Michael Brewer
NCEI/NOAA

