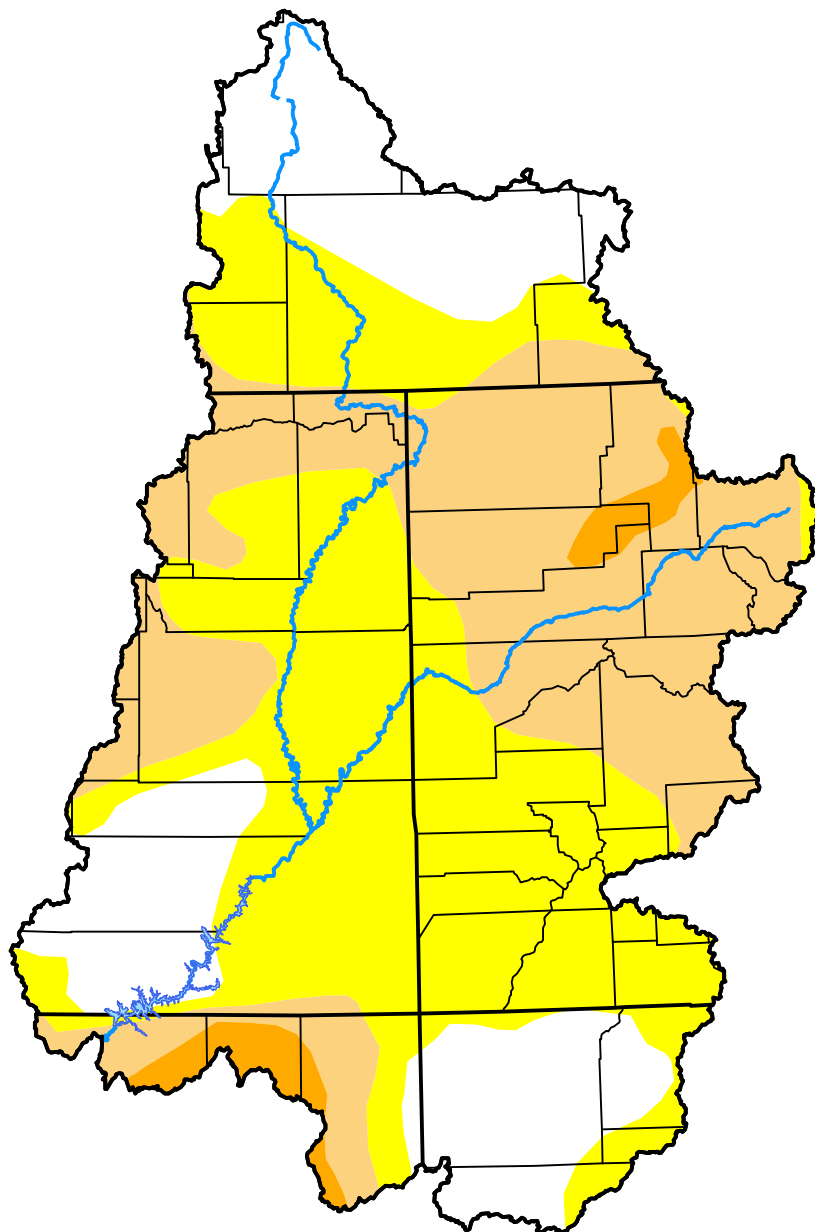


U.S. Drought Monitor

Upper Colorado Watershed

March 27, 2012
 (Released Thursday, Mar. 29, 2012)
 Valid 8 a.m. EDT



Drought Conditions (Percent Area)

	None	D0	D1	D2	D3	D4
Current	22.94	42.55	31.67	2.84	0.00	0.00
Last Week <i>03-22-2012</i>	26.48	46.60	25.24	1.69	0.00	0.00
3 Months Ago <i>12-29-2011</i>	87.64	7.13	3.27	1.97	0.00	0.00
Start of Calendar Year <i>01-05-2012</i>	85.44	9.33	3.27	1.97	0.00	0.00
Start of Water Year <i>09-29-2011</i>	75.42	14.23	6.63	3.72	0.00	0.00
One Year Ago <i>03-31-2011</i>	83.04	14.45	2.51	0.00	0.00	0.00

Intensity:

- None
- D0 Abnormally Dry
- D1 Moderate Drought
- D2 Severe Drought
- D3 Extreme Drought
- D4 Exceptional Drought

The Drought Monitor focuses on broad-scale conditions. Local conditions may vary. For more information on the Drought Monitor, go to <https://droughtmonitor.unl.edu/About.aspx>

Author:

Eric Luebehusen
 U.S. Department of Agriculture



droughtmonitor.unl.edu