

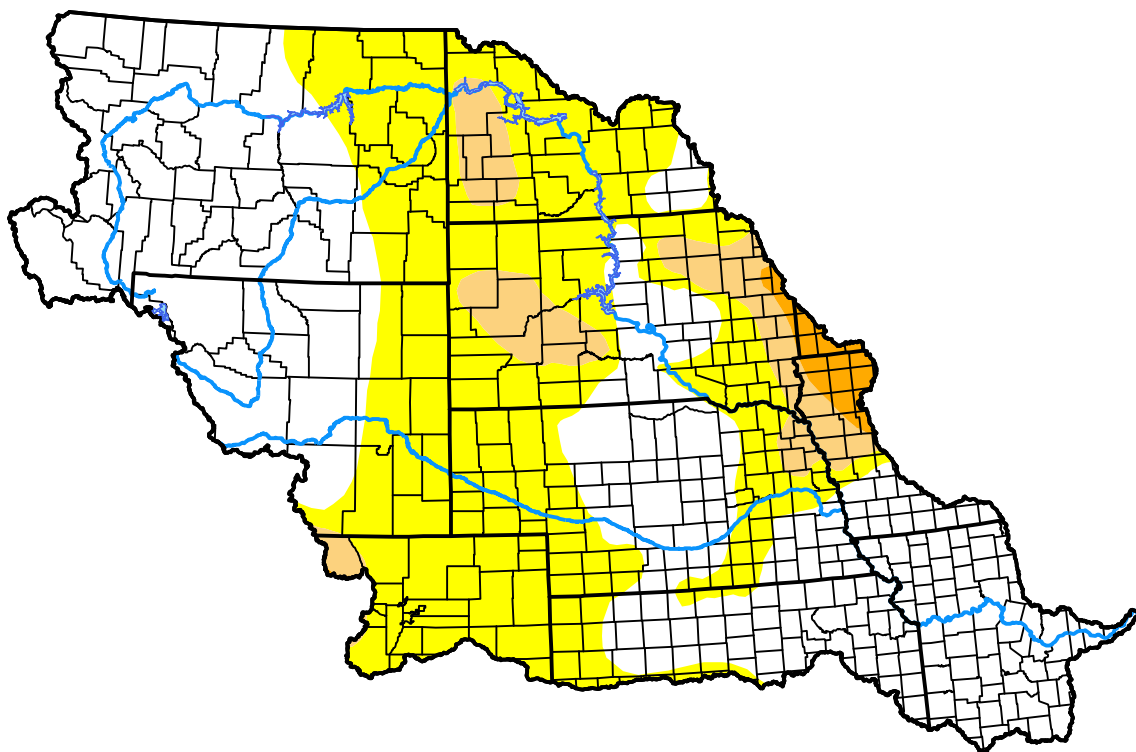
U.S. Drought Monitor

Missouri Watershed

April 3, 2012
 (Released Thursday, Apr. 5, 2012)
 Valid 8 a.m. EDT

Drought Conditions (Percent Area)

	None	D0-D4	D1-D4	D2-D4	D3-D4	D4
Current	51.54	48.46	8.36	1.42	0.00	0.00
Last Week <i>03-29-2012</i>	60.10	39.90	6.26	1.40	0.00	0.00
3 Months Ago <i>01-05-2012</i>	74.38	25.62	6.51	1.98	0.00	0.00
Start of Calendar Year <i>01-05-2012</i>	74.38	25.62	6.51	1.98	0.00	0.00
Start of Water Year <i>09-29-2011</i>	71.78	28.22	4.58	0.25	0.01	0.00
One Year Ago <i>04-07-2011</i>	76.60	23.40	11.16	3.67	0.00	0.00



Intensity:



The Drought Monitor focuses on broad-scale conditions. Local conditions may vary. For more information on the Drought Monitor, go to <https://droughtmonitor.unl.edu/About.aspx>

Author:

Brian Fuchs
 National Drought Mitigation Center



droughtmonitor.unl.edu