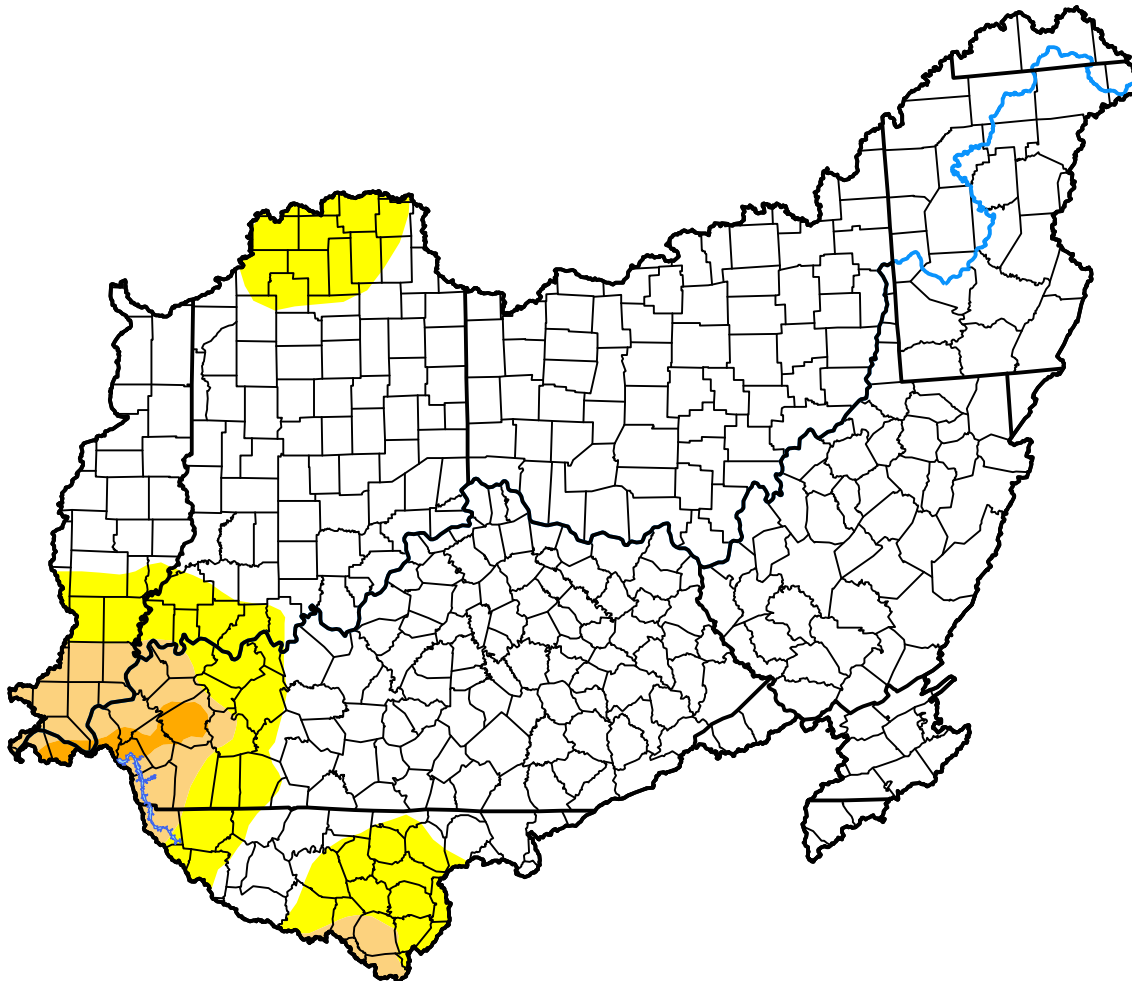


U.S. Drought Monitor Ohio Watershed

May 15, 2012
(Released Thursday, May. 17, 2012)
Valid 8 a.m. EDT

Drought Conditions (Percent Area)

	None	D0	D1	D2	D3	D4
Current	85.32	10.03	3.93	0.72	0.00	0.00
Last Week <i>05-10-2012</i>	85.55	11.87	2.16	0.41	0.00	0.00
3 Months Ago <i>02-16-2012</i>	100.00	0.00	0.00	0.00	0.00	0.00
Start of Calendar Year <i>01-05-2012</i>	100.00	0.00	0.00	0.00	0.00	0.00
Start of Water Year <i>09-29-2011</i>	83.26	13.62	3.12	0.00	0.00	0.00
One Year Ago <i>05-19-2011</i>	100.00	0.00	0.00	0.00	0.00	0.00



Intensity:



The Drought Monitor focuses on broad-scale conditions. Local conditions may vary. For more information on the Drought Monitor, go to <https://droughtmonitor.unl.edu/About.aspx>

Author:

Brad Rippey
U.S. Department of Agriculture



droughtmonitor.unl.edu