

U.S. Drought Monitor

Pacific Northwest Watershed

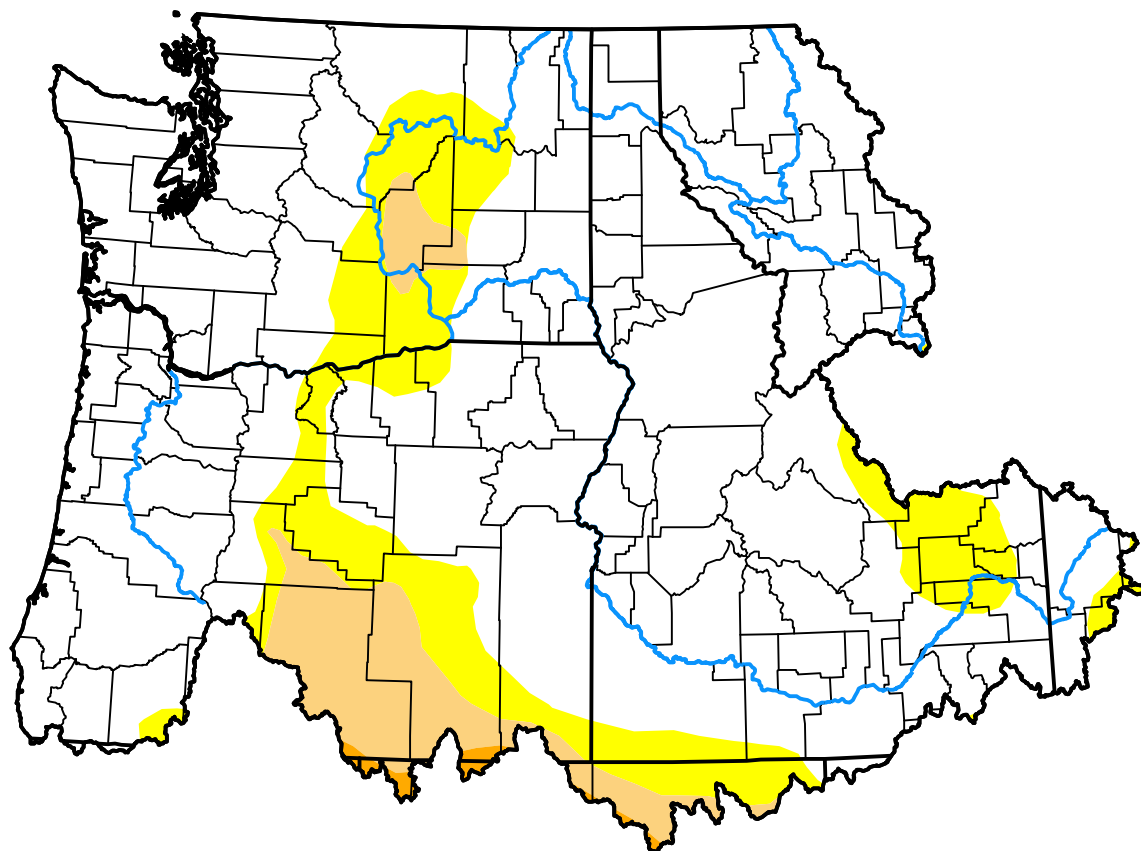
May 15, 2012

(Released Thursday, May. 17, 2012)

Valid 8 a.m. EDT

Drought Conditions (Percent Area)

| | None | D0-D4 | D1-D4 | D2-D4 | D3-D4 | D4 |
|---|--------|-------|-------|-------|-------|------|
| Current | 79.70 | 20.30 | 6.66 | 0.42 | 0.00 | 0.00 |
| Last Week 05-10-2012 | 79.70 | 20.30 | 6.66 | 0.42 | 0.00 | 0.00 |
| 3 Months Ago 02-16-2012 | 48.02 | 51.98 | 12.33 | 0.02 | 0.00 | 0.00 |
| Start of Calendar Year 01-05-2012 | 53.75 | 46.25 | 7.06 | 0.00 | 0.00 | 0.00 |
| Start of Water Year 09-29-2011 | 89.09 | 10.91 | 0.00 | 0.00 | 0.00 | 0.00 |
| One Year Ago 05-19-2011 | 100.00 | 0.00 | 0.00 | 0.00 | 0.00 | 0.00 |



Intensity:

| | |
|---------------------|------------------------|
| None | D2 Severe Drought |
| D0 Abnormally Dry | D3 Extreme Drought |
| D1 Moderate Drought | D4 Exceptional Drought |

The Drought Monitor focuses on broad-scale conditions. Local conditions may vary. For more information on the Drought Monitor, go to <https://droughtmonitor.unl.edu/About.aspx>

Author:

Brad Rippey
U.S. Department of Agriculture



droughtmonitor.unl.edu