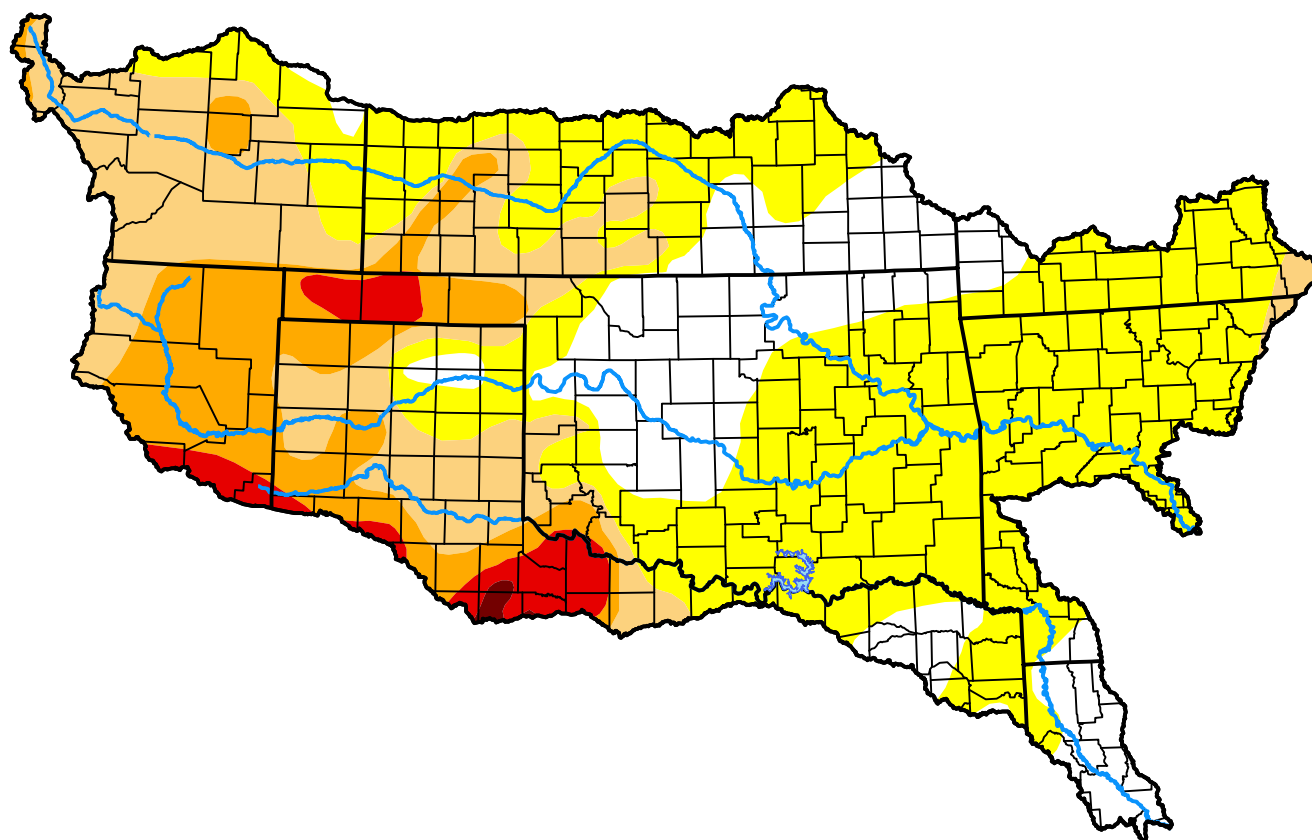


# Arkansas-White-Red Watershed

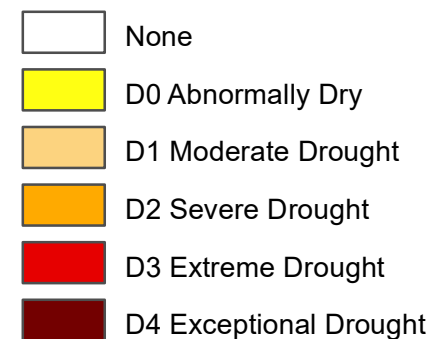
May 22, 2012

(Released Thursday, May. 24, 2012)

Valid 8 a.m. EDT



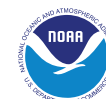
Intensity:



*The Drought Monitor focuses on broad-scale conditions. Local conditions may vary. For more information on the Drought Monitor, go to <https://droughtmonitor.unl.edu/About.aspx>*

Author:

Brad Rippey  
U.S. Department of Agriculture



[droughtmonitor.unl.edu](https://droughtmonitor.unl.edu)