

U.S. Drought Monitor

Arkansas-White-Red Watershed

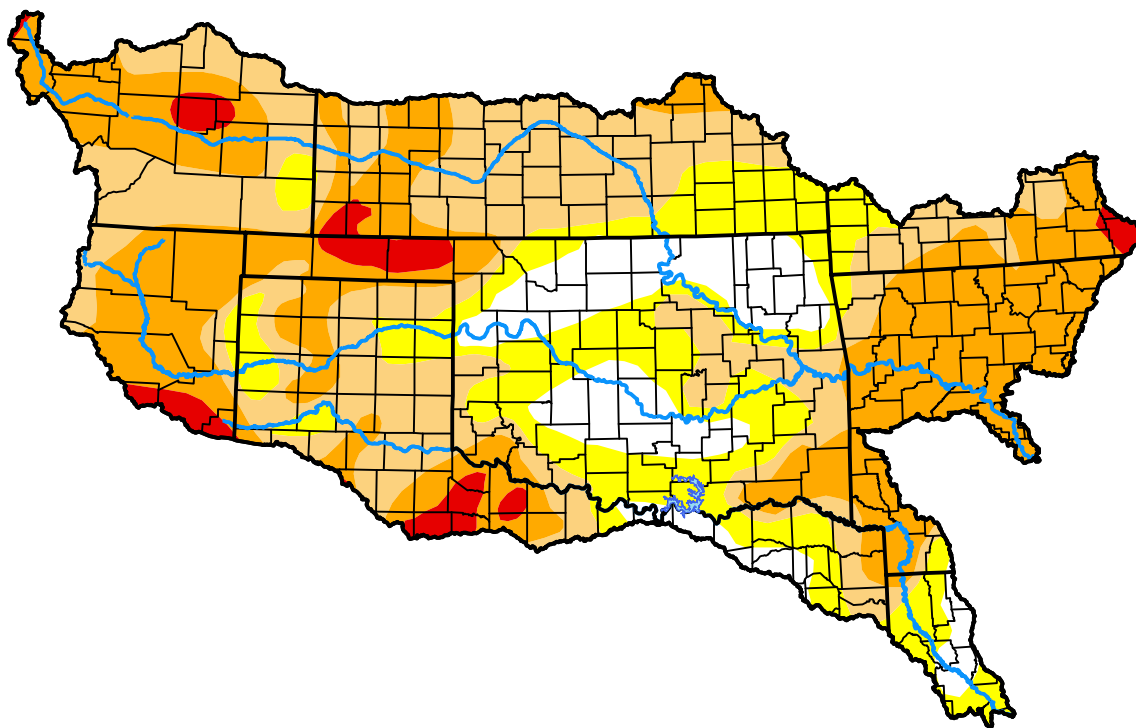
June 19, 2012

(Released Thursday, Jun. 21, 2012)

Valid 8 a.m. EDT

Drought Conditions (Percent Area)

	None	D0-D4	D1-D4	D2-D4	D3-D4	D4
Current	11.21	88.79	69.08	36.42	3.71	0.00
Last Week <i>06-14-2012</i>	18.78	81.22	59.53	19.14	3.09	0.00
3 Months Ago <i>03-22-2012</i>	38.31	61.69	49.36	29.00	10.65	1.97
Start of Calendar Year <i>01-05-2012</i>	19.64	80.36	71.75	45.11	16.43	2.75
Start of Water Year <i>09-29-2011</i>	3.15	96.85	93.39	84.29	59.42	41.76
One Year Ago <i>06-23-2011</i>	25.12	74.88	67.65	57.93	42.35	24.94



Intensity:



The Drought Monitor focuses on broad-scale conditions. Local conditions may vary. For more information on the Drought Monitor, go to <https://droughtmonitor.unl.edu/About.aspx>

Author:

Richard Heim
NCEI/NOAA



droughtmonitor.unl.edu