

U.S. Drought Monitor

Arkansas-White-Red Watershed

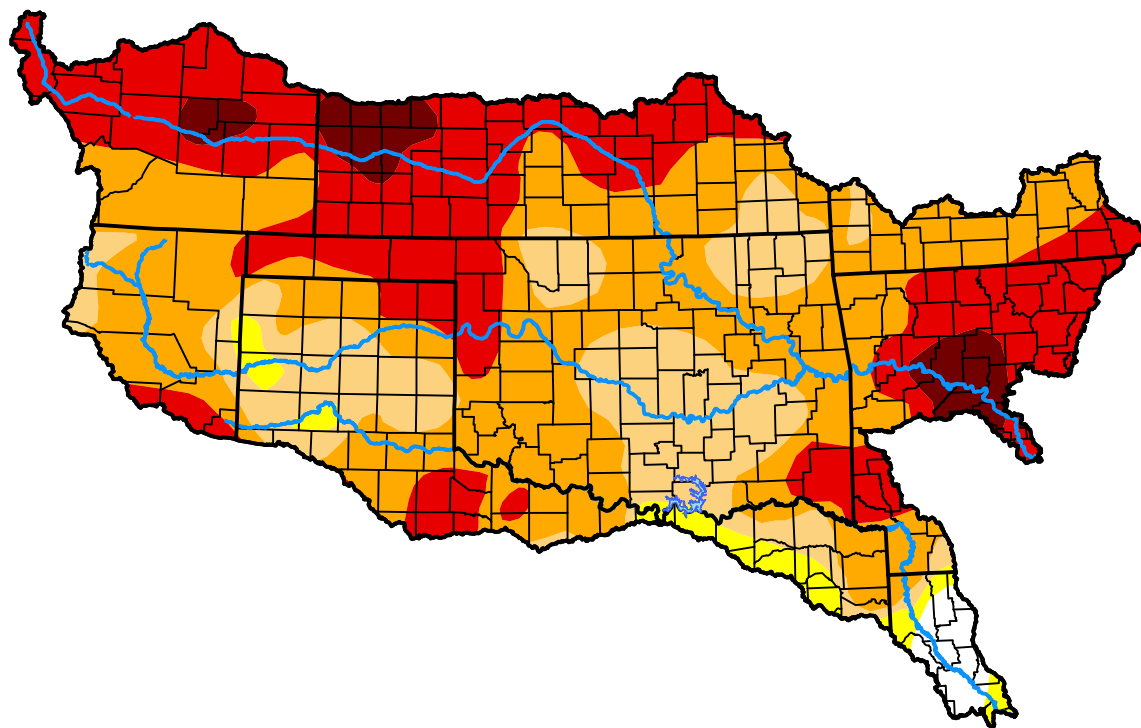
July 17, 2012

(Released Thursday, Jul. 19, 2012)

Valid 8 a.m. EDT

Drought Conditions (Percent Area)

	None	D0	D1	D2	D3	D4
Current	1.62	2.98	19.03	41.91	30.19	4.27
Last Week <i>07-12-2012</i>	0.27	2.90	33.53	36.93	25.27	1.10
3 Months Ago <i>04-19-2012</i>	52.47	11.42	18.71	13.04	3.57	0.79
Start of Calendar Year <i>01-05-2012</i>	19.64	8.60	26.65	28.68	13.68	2.75
Start of Water Year <i>09-29-2011</i>	3.15	3.45	9.11	24.87	17.66	41.76
One Year Ago <i>07-21-2011</i>	3.18	12.74	16.24	15.54	23.34	28.97



Intensity:



The Drought Monitor focuses on broad-scale conditions. Local conditions may vary. For more information on the Drought Monitor, go to <https://droughtmonitor.unl.edu/About.aspx>

Author:

Richard Heim
NCEI/NOAA



droughtmonitor.unl.edu