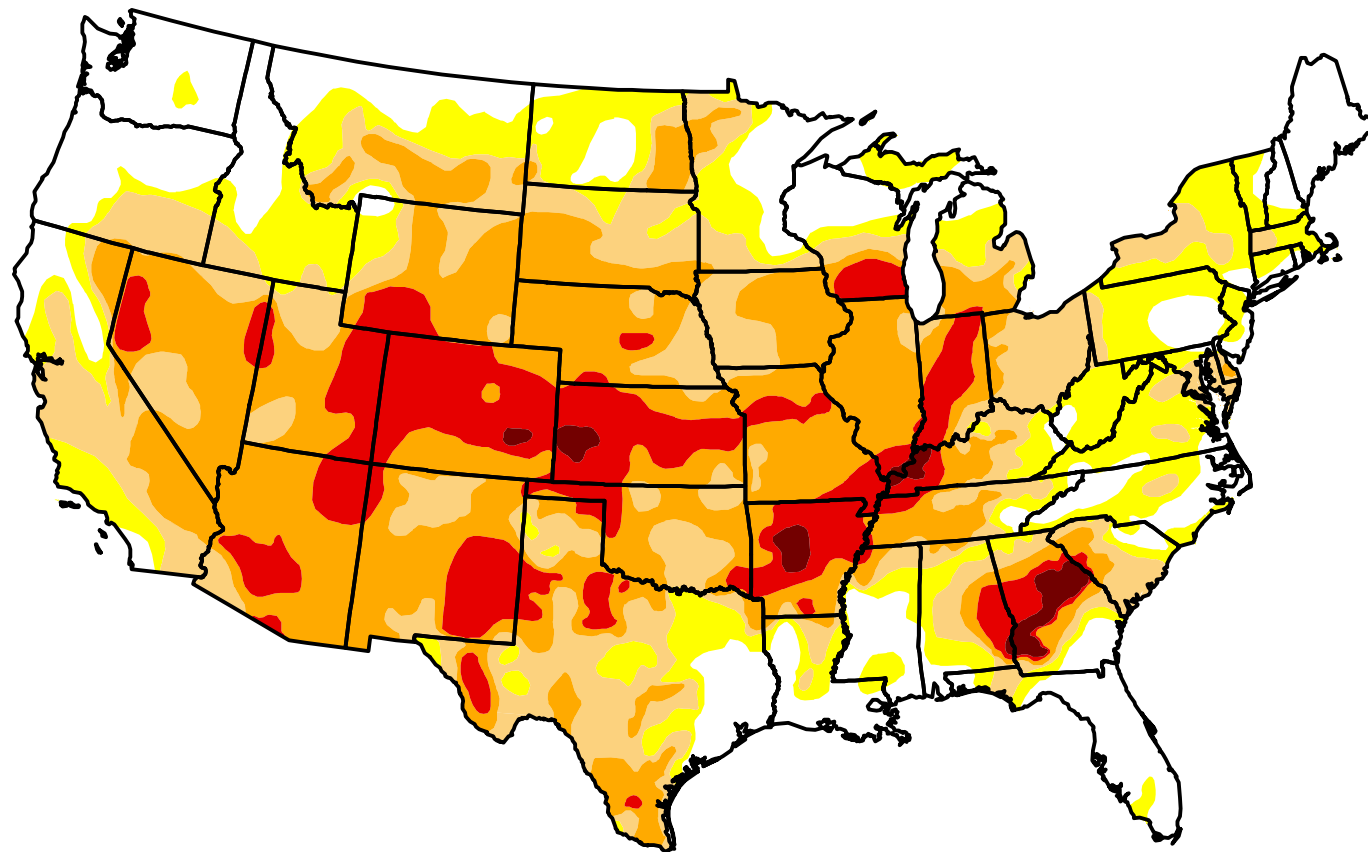
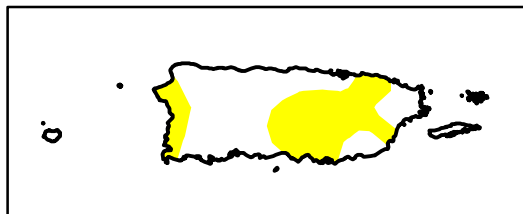
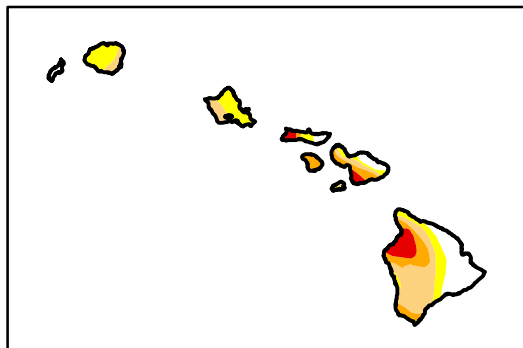
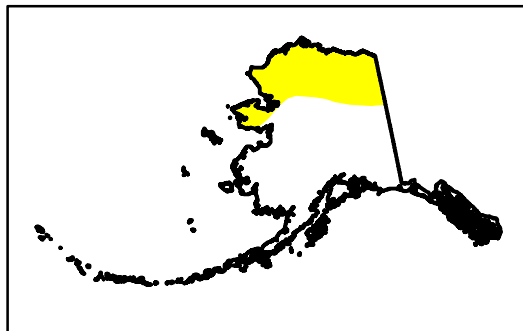







U.S. Drought Monitor

Total U.S.

July 17, 2012
(Released Thursday, Jul. 19, 2012)
Valid 7 a.m. EST



Intensity:

-  D0 Abnormally Dry
-  D1 Moderate Drought
-  D2 Severe Drought
-  D3 Extreme Drought
-  D4 Exceptional Drought

The Drought Monitor focuses on broad-scale conditions. Local conditions may vary. See accompanying text summary for forecast statements.

Author:
Richard Heim
NCDC/NOAA



<http://droughtmonitor.unl.edu/>