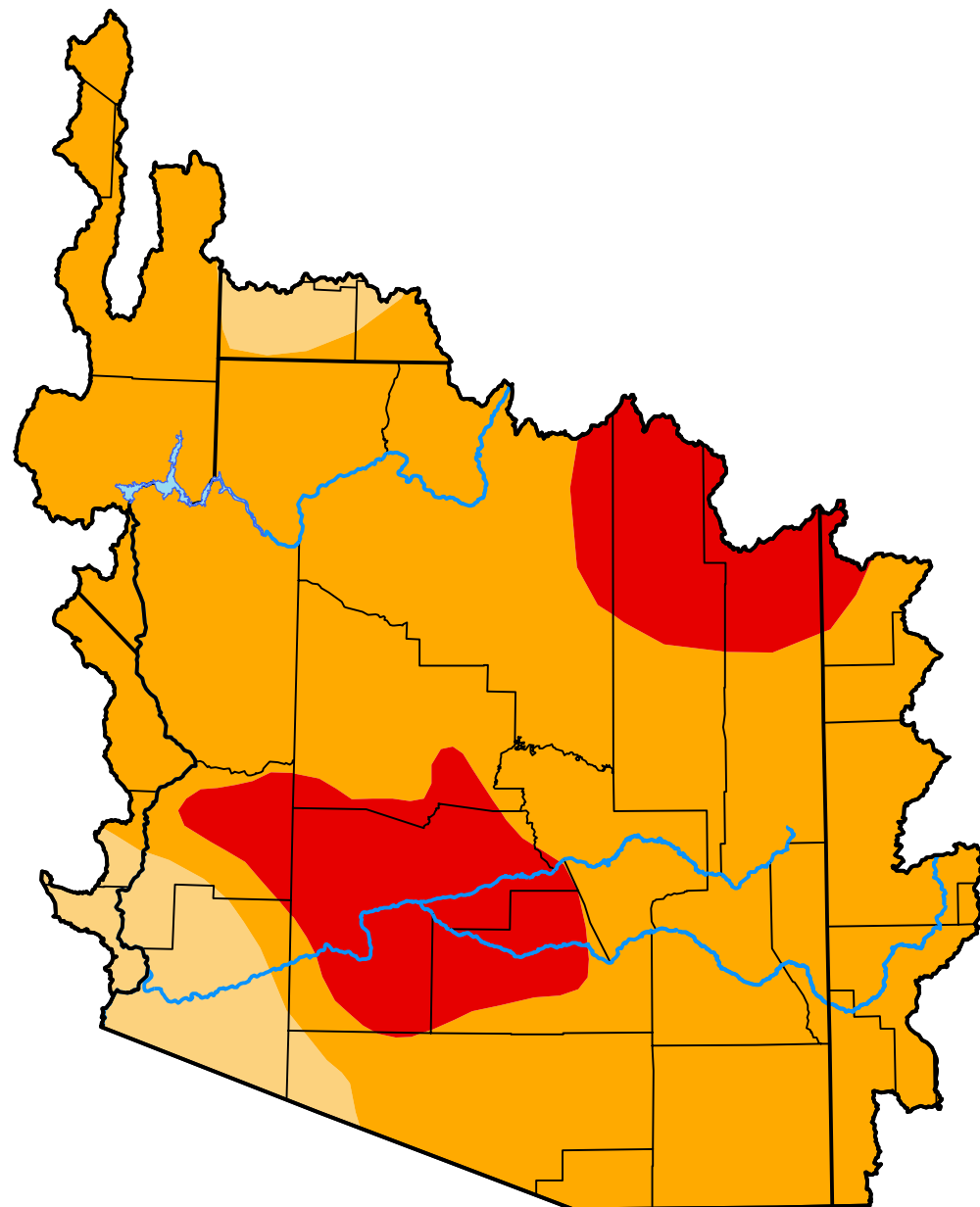


U.S. Drought Monitor

Lower Colorado Watershed

July 31, 2012
 (Released Thursday, Aug. 2, 2012)
 Valid 8 a.m. EDT



Drought Conditions (Percent Area)

	None	D0	D1	D2	D3	D4
Current	0.00	0.00	7.32	75.65	17.03	0.00
Last Week <i>07-26-2012</i>	0.00	0.00	7.32	75.65	17.03	0.00
3 Months Ago <i>05-03-2012</i>	0.00	4.34	35.88	48.38	11.40	0.00
Start of Calendar Year <i>01-05-2012</i>	25.39	21.58	24.39	26.38	2.26	0.00
Start of Water Year <i>09-29-2011</i>	9.35	28.39	22.46	21.65	12.50	5.66
One Year Ago <i>08-04-2011</i>	19.73	26.27	16.92	19.56	9.37	8.16

Intensity:



The Drought Monitor focuses on broad-scale conditions. Local conditions may vary. For more information on the Drought Monitor, go to <https://droughtmonitor.unl.edu/About.aspx>

Author:

Mark Svoboda
 National Drought Mitigation Center

