

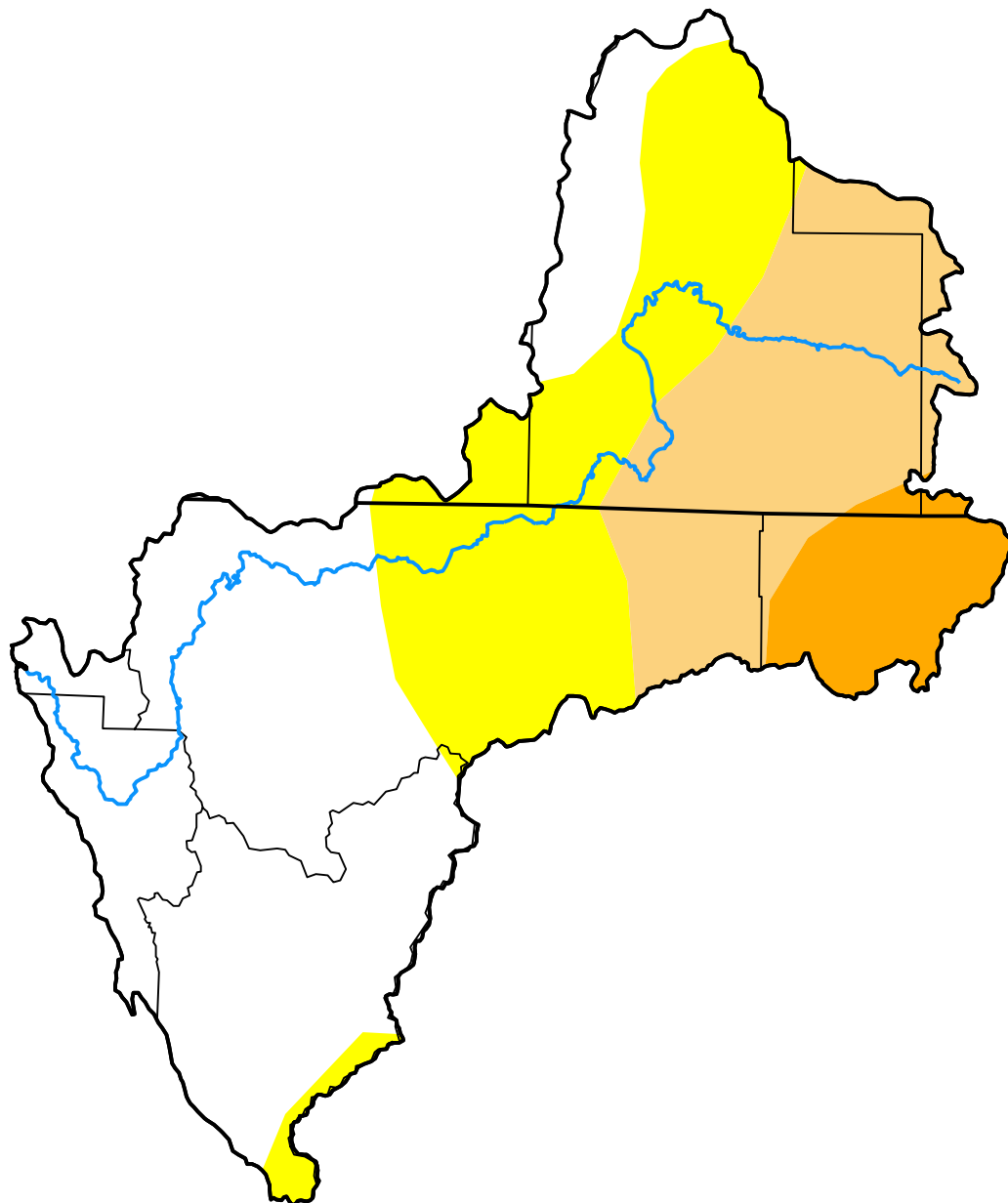
U.S. Drought Monitor Klamath River Basin

August 14, 2012
(Released Thursday, Aug. 16, 2012)

Valid 8 a.m. EDT

Drought Conditions (Percent Area)

	None	D0-D4	D1-D4	D2-D4	D3-D4	D4
Current	44.58	55.42	29.04	7.24	0.00	0.00
Last Week <i>08-07-2012</i>	46.34	53.66	29.19	7.24	0.00	0.00
3 Months Ago <i>05-15-2012</i>	44.22	55.78	28.23	7.45	0.00	0.00
Start of Calendar Year <i>01-03-2012</i>	0.00	100.00	49.37	0.00	0.00	0.00
Start of Water Year <i>09-27-2011</i>	100.00	0.00	0.00	0.00	0.00	0.00
One Year Ago <i>08-16-2011</i>	100.00	0.00	0.00	0.00	0.00	0.00



Intensity:

- None
- D0 Abnormally Dry
- D1 Moderate Drought
- D2 Severe Drought
- D3 Extreme Drought
- D4 Exceptional Drought

The Drought Monitor focuses on broad-scale conditions. Local conditions may vary. For more information on the Drought Monitor, go to <https://droughtmonitor.unl.edu/About.aspx>

Author:

Michael Brewer
NCEI/NOAA

