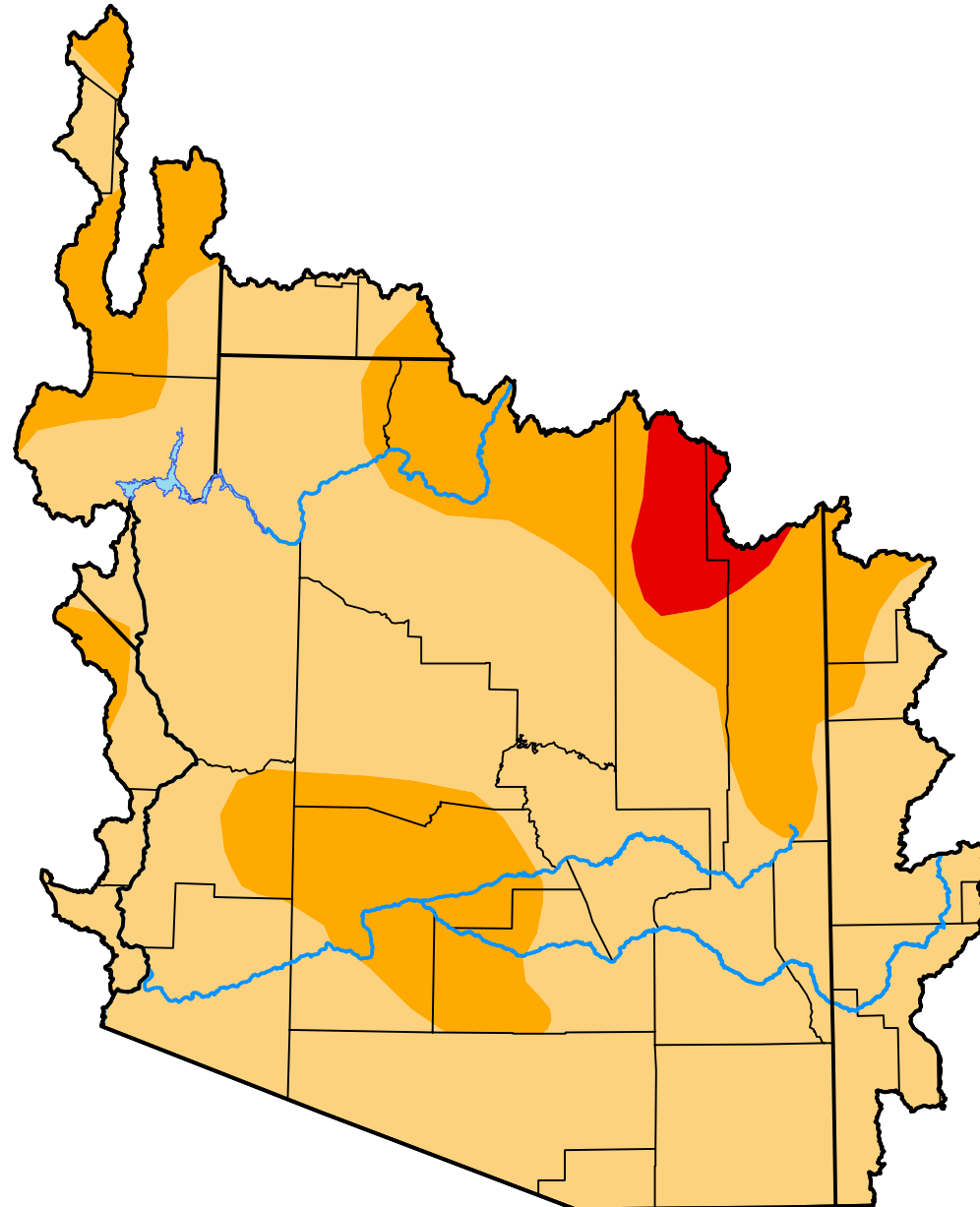


U.S. Drought Monitor

Lower Colorado Watershed

September 11, 2012
 (Released Thursday, Sep. 13, 2012)
 Valid 8 a.m. EDT



Drought Conditions (Percent Area)

	None	D0-D4	D1-D4	D2-D4	D3-D4	D4
Current	0.00	100.00	100.00	28.00	2.56	0.00
Last Week <i>09-06-2012</i>	0.00	100.00	100.00	38.23	2.56	0.00
3 Months Ago <i>06-14-2012</i>	0.00	100.00	96.08	82.40	11.40	0.00
Start of Calendar Year <i>01-05-2012</i>	25.39	74.61	53.03	28.64	2.26	0.00
Start of Water Year <i>09-29-2011</i>	9.35	90.65	62.26	39.81	18.16	5.66
One Year Ago <i>09-15-2011</i>	3.05	96.95	62.94	42.31	21.26	6.08

Intensity:

- None
- D0 Abnormally Dry
- D1 Moderate Drought
- D2 Severe Drought
- D3 Extreme Drought
- D4 Exceptional Drought

The Drought Monitor focuses on broad-scale conditions. Local conditions may vary. For more information on the Drought Monitor, go to <https://droughtmonitor.unl.edu/About.aspx>

Author:

David Simeral
 Western Regional Climate Center



droughtmonitor.unl.edu