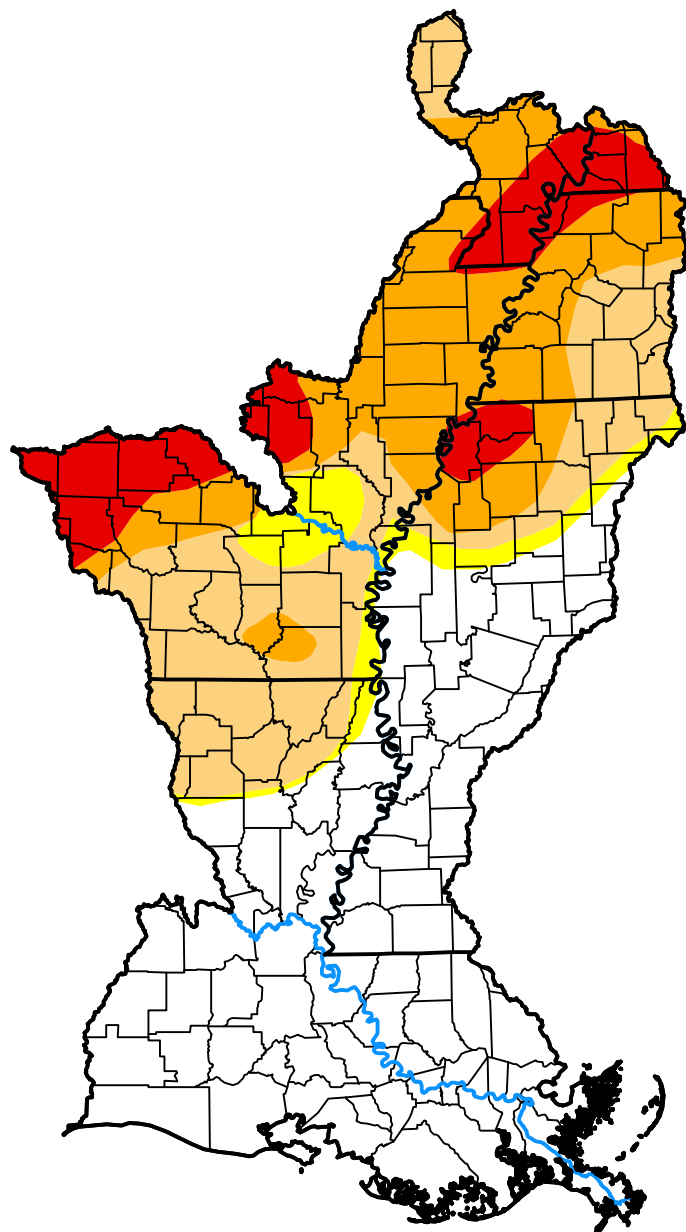


U.S. Drought Monitor

Lower Mississippi Watershed

September 11, 2012
 (Released Thursday, Sep. 13, 2012)
 Valid 8 a.m. EDT



Drought Conditions (Percent Area)

	None	D0	D1	D2	D3	D4
Current	46.47	4.70	20.06	18.97	9.80	0.00
Last Week <i>09-06-2012</i>	46.47	4.79	15.34	15.02	14.99	3.38
3 Months Ago <i>06-14-2012</i>	34.24	31.79	28.77	5.20	0.00	0.00
Start of Calendar Year <i>01-05-2012</i>	61.50	8.95	11.00	9.43	7.57	1.54
Start of Water Year <i>09-29-2011</i>	41.41	26.40	15.42	7.41	8.48	0.89
One Year Ago <i>09-15-2011</i>	39.59	26.93	16.69	8.90	6.99	0.89

Intensity:



The Drought Monitor focuses on broad-scale conditions. Local conditions may vary. For more information on the Drought Monitor, go to <https://droughtmonitor.unl.edu/About.aspx>

Author:

David Simeral
 Western Regional Climate Center



droughtmonitor.unl.edu