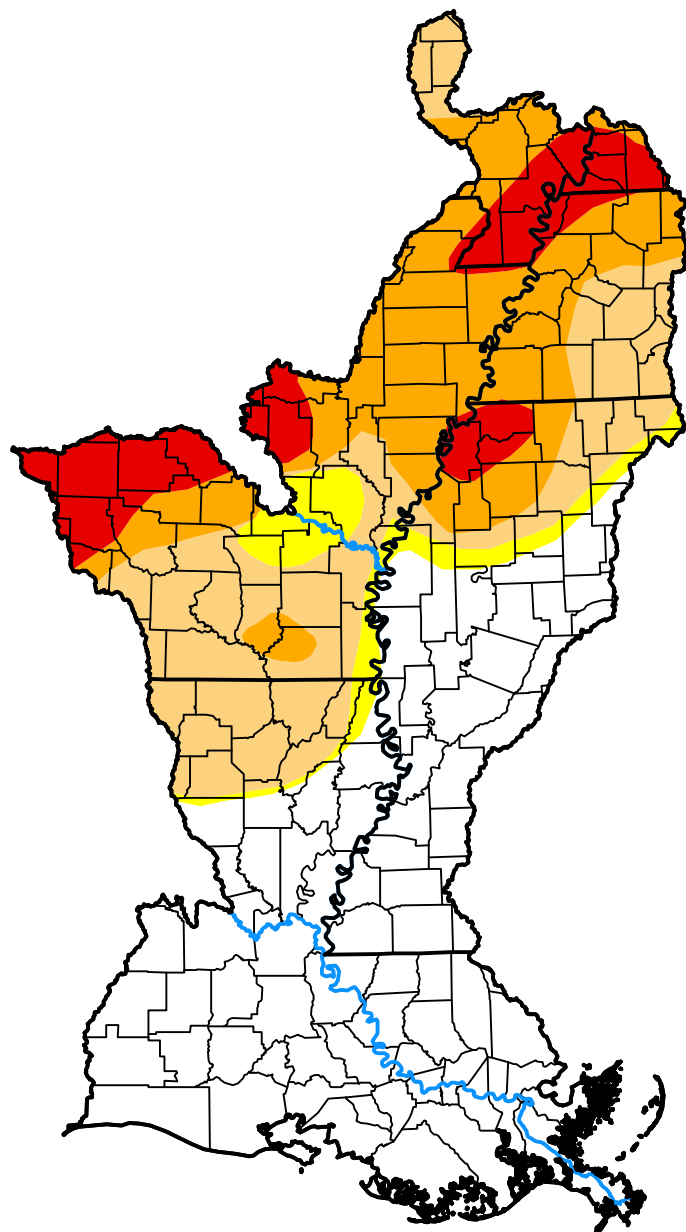


U.S. Drought Monitor

Lower Mississippi Watershed

September 11, 2012
 (Released Thursday, Sep. 13, 2012)
 Valid 8 a.m. EDT



Drought Conditions (Percent Area)

	None	D0-D4	D1-D4	D2-D4	D3-D4	D4
Current	46.47	53.53	48.83	28.77	9.80	0.00
Last Week <i>09-06-2012</i>	46.47	53.53	48.74	33.40	18.38	3.38
3 Months Ago <i>06-14-2012</i>	34.24	65.76	33.97	5.20	0.00	0.00
Start of Calendar Year <i>01-05-2012</i>	61.50	38.50	29.55	18.54	9.11	1.54
Start of Water Year <i>09-29-2011</i>	41.41	58.59	32.20	16.78	9.37	0.89
One Year Ago <i>09-15-2011</i>	39.59	60.41	33.47	16.78	7.88	0.89

Intensity:



The Drought Monitor focuses on broad-scale conditions. Local conditions may vary. For more information on the Drought Monitor, go to <https://droughtmonitor.unl.edu/About.aspx>

Author:

David Simeral
 Western Regional Climate Center

