

U.S. Drought Monitor

Arkansas-White-Red Watershed

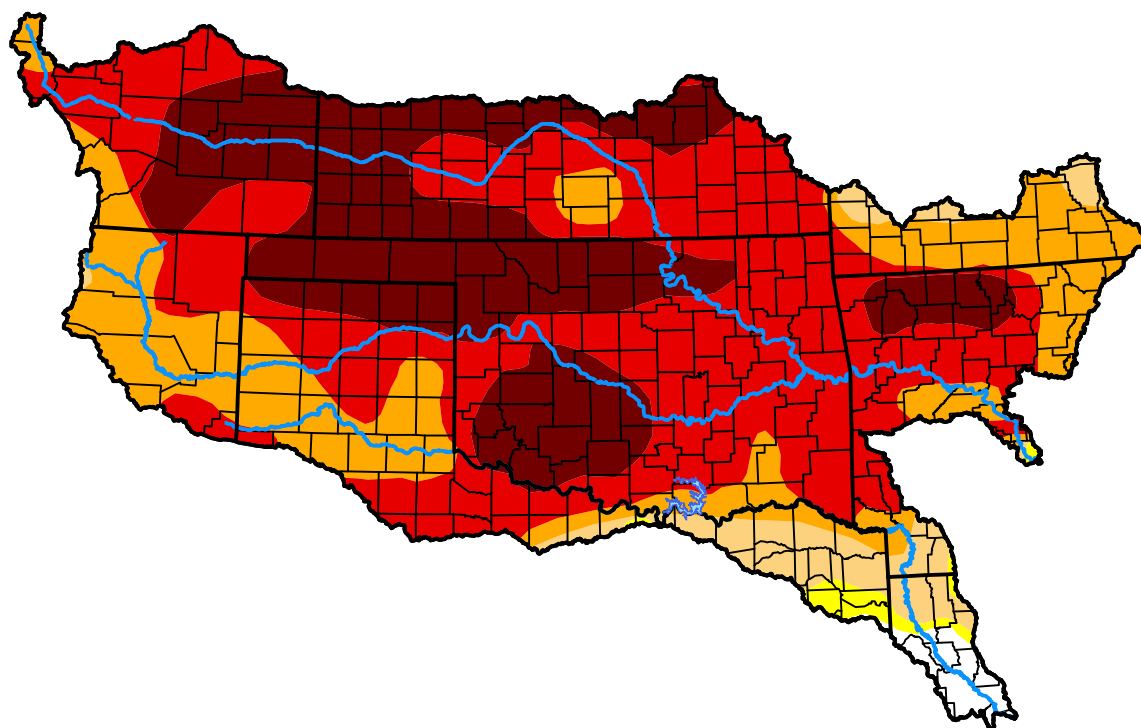
September 18, 2012

(Released Thursday, Sep. 20, 2012)

Valid 8 a.m. EDT

Drought Conditions (Percent Area)

	None	D0-D4	D1-D4	D2-D4	D3-D4	D4
Current	1.51	98.49	97.43	92.23	71.23	28.23
Last Week <i>09-13-2012</i>	1.41	98.59	97.65	92.82	71.76	30.19
3 Months Ago <i>06-21-2012</i>	11.21	88.79	69.08	36.42	3.71	0.00
Start of Calendar Year <i>01-05-2012</i>	19.64	80.36	71.75	45.11	16.43	2.75
Start of Water Year <i>09-29-2011</i>	3.15	96.85	93.39	84.29	59.42	41.76
One Year Ago <i>09-22-2011</i>	2.94	97.06	93.42	82.12	62.04	41.76



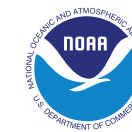
Intensity:

None	D2 Severe Drought
D0 Abnormally Dry	D3 Extreme Drought
D1 Moderate Drought	D4 Exceptional Drought

The Drought Monitor focuses on broad-scale conditions. Local conditions may vary. For more information on the Drought Monitor, go to <https://droughtmonitor.unl.edu/About.aspx>

Author:

David Simeral
Western Regional Climate Center



droughtmonitor.unl.edu