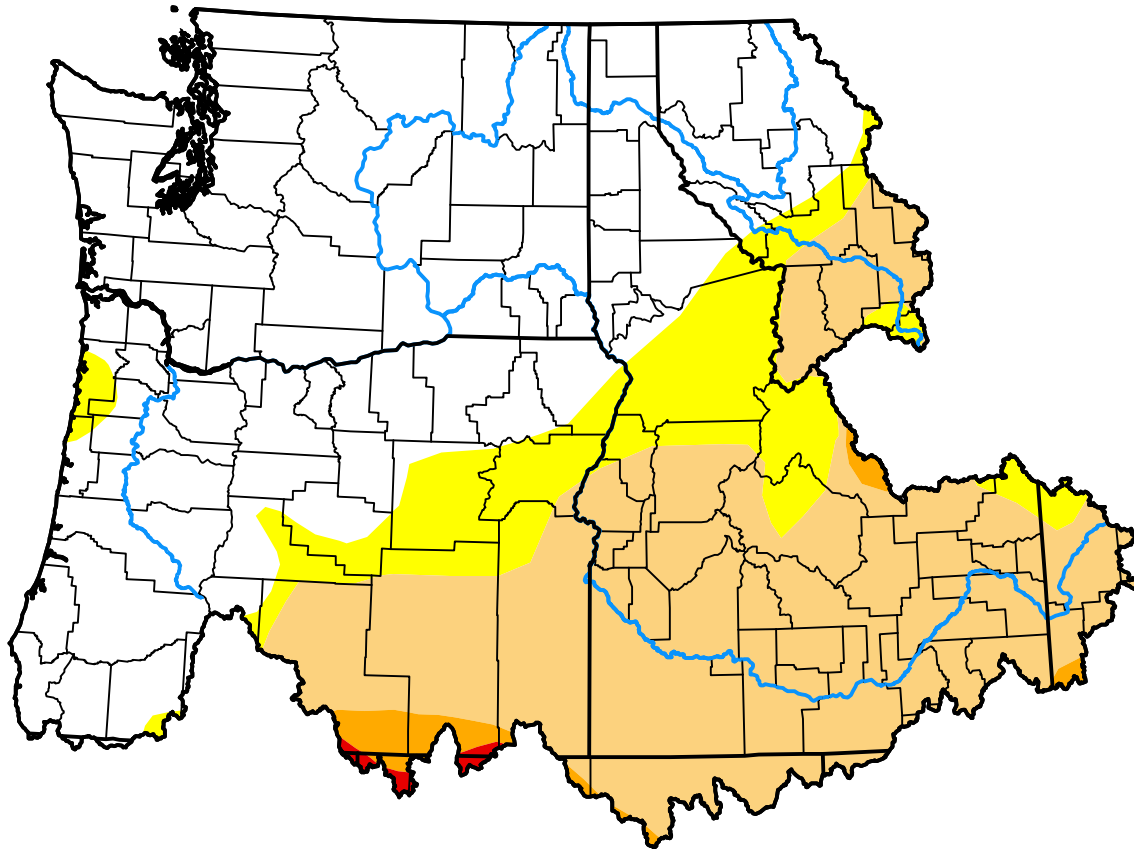


U.S. Drought Monitor

Pacific Northwest Watershed

September 18, 2012
 (Released Thursday, Sep. 20, 2012)
 Valid 8 a.m. EDT



Drought Conditions (Percent Area)

	None	D0	D1	D2	D3	D4
Current	53.39	12.35	32.61	1.38	0.27	0.00
Last Week <i>09-13-2012</i>	52.76	13.25	32.37	1.35	0.27	0.00
3 Months Ago <i>06-21-2012</i>	78.51	15.42	5.66	0.42	0.00	0.00
Start of Calendar Year <i>01-05-2012</i>	53.75	39.19	7.06	0.00	0.00	0.00
Start of Water Year <i>09-29-2011</i>	89.09	10.91	0.00	0.00	0.00	0.00
One Year Ago <i>09-22-2011</i>	100.00	0.00	0.00	0.00	0.00	0.00

Intensity:

- None
- D0 Abnormally Dry
- D1 Moderate Drought
- D2 Severe Drought
- D3 Extreme Drought
- D4 Exceptional Drought

The Drought Monitor focuses on broad-scale conditions. Local conditions may vary. For more information on the Drought Monitor, go to <https://droughtmonitor.unl.edu/About.aspx>

Author:

David Simeral
 Western Regional Climate Center

