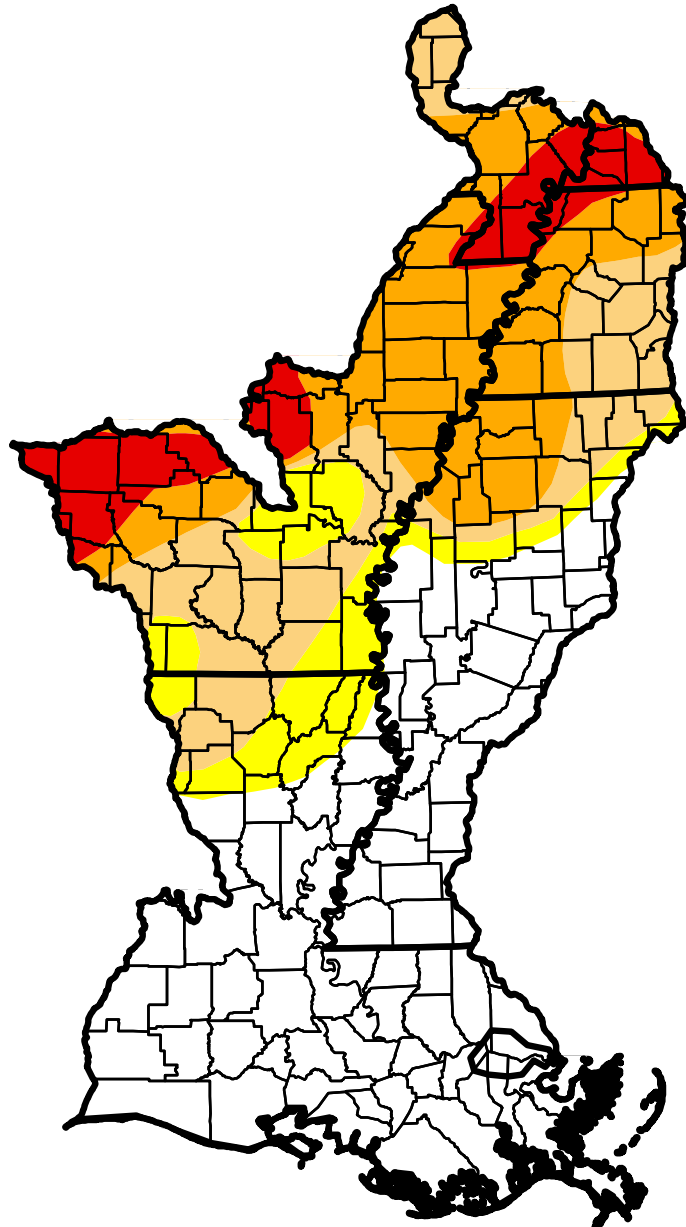


U.S. Drought Monitor

Lower Mississippi Watershed

October 2, 2012
 (Released Thursday, Oct. 4, 2012)
 Valid 8 a.m. EDT



Drought Conditions (Percent Area)

	None	D0-D4	D1-D4	D2-D4	D3-D4	D4
Current	46.32	53.68	44.13	27.47	8.35	0.00
Last Week <i>9/25/2012</i>	46.32	53.68	44.13	27.80	9.61	0.00
3 Months Ago <i>7/3/2012</i>	21.91	78.09	56.54	41.02	13.65	0.00
Start of Calendar Year <i>1/3/2012</i>	61.49	38.51	29.56	18.54	9.11	1.54
Start of Water Year <i>9/25/2012</i>	46.32	53.68	44.13	27.80	9.61	0.00
One Year Ago <i>10/4/2011</i>	41.30	58.70	37.73	13.96	9.13	0.92

Intensity:

- D0 Abnormally Dry
- D1 Moderate Drought
- D2 Severe Drought
- D3 Extreme Drought
- D4 Exceptional Drought

The Drought Monitor focuses on broad-scale conditions. Local conditions may vary. See accompanying text summary for forecast statements.

Author:
 Anthony Artusa
 NOAA/NWS/NCEP/CPC

