

# U.S. Drought Monitor

## Arkansas-White-Red Watershed

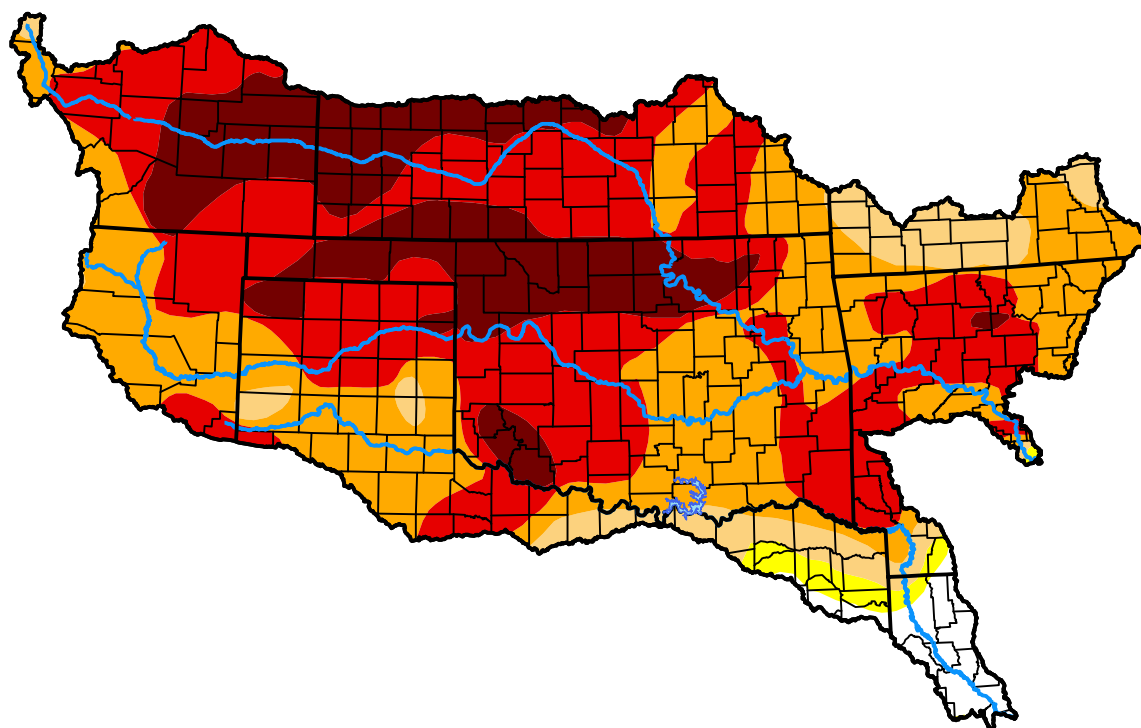
October 23, 2012

(Released Thursday, Oct. 25, 2012)

Valid 8 a.m. EDT

### Drought Conditions (Percent Area)

	None	D0-D4	D1-D4	D2-D4	D3-D4	D4
<b>Current</b>	2.73	97.27	95.76	88.90	56.53	18.60
<b>Last Week</b> 10-18-2012	2.95	97.05	95.54	88.81	56.34	18.60
<b>3 Months Ago</b> 07-26-2012	1.62	98.38	96.70	87.14	53.18	9.16
<b>Start of Calendar Year</b> 01-05-2012	19.64	80.36	71.75	45.11	16.43	2.75
<b>Start of Water Year</b> 09-27-2012	1.37	98.63	97.75	92.40	71.23	28.23
<b>One Year Ago</b> 10-27-2011	4.24	95.76	90.71	83.44	61.21	35.48



### Intensity:

None	D2 Severe Drought
D0 Abnormally Dry	D3 Extreme Drought
D1 Moderate Drought	D4 Exceptional Drought

The Drought Monitor focuses on broad-scale conditions. Local conditions may vary. For more information on the Drought Monitor, go to <https://droughtmonitor.unl.edu/About.aspx>

### Author:

Brad Rippey  
U.S. Department of Agriculture



[droughtmonitor.unl.edu](https://droughtmonitor.unl.edu)