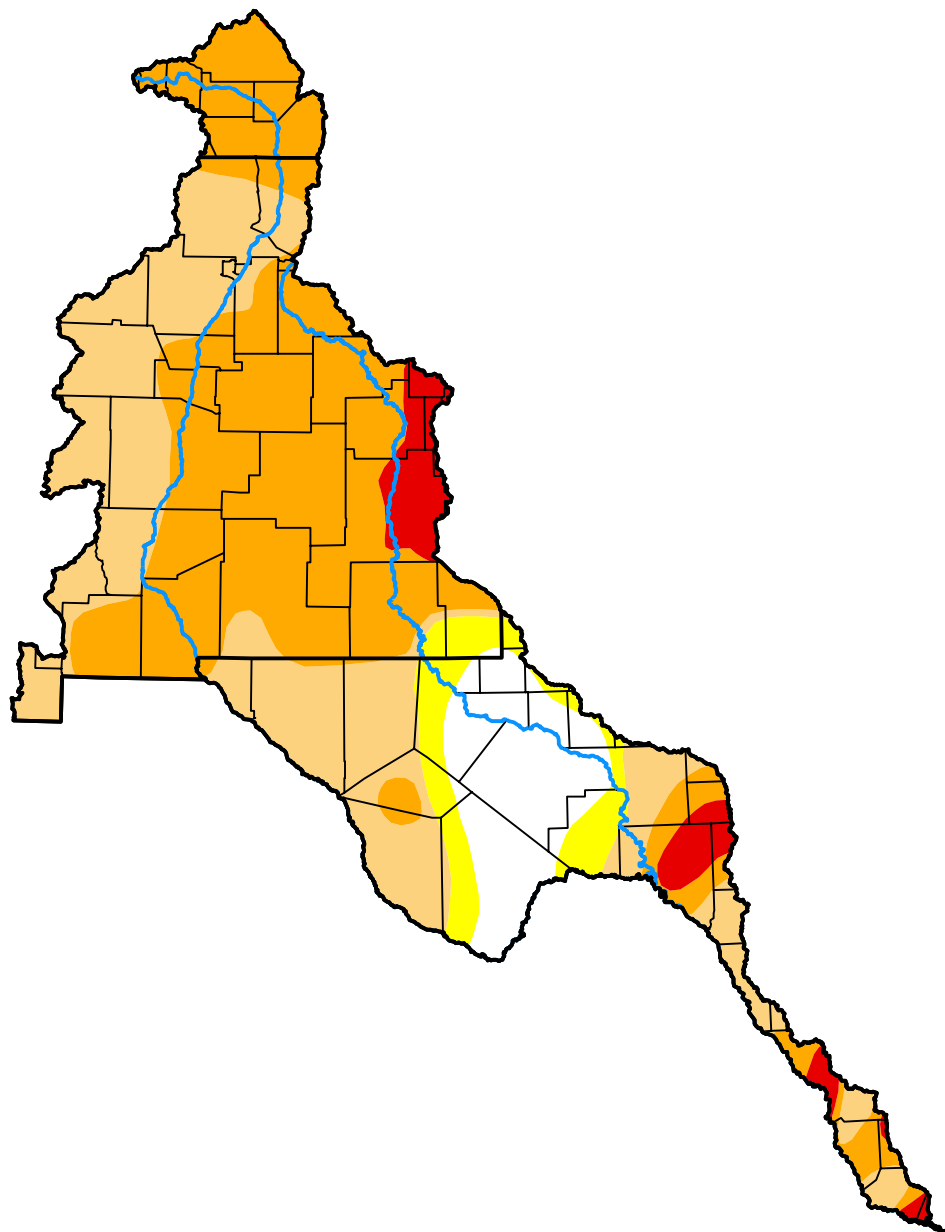


U.S. Drought Monitor

Rio Grande Watershed

October 23, 2012
 (Released Thursday, Oct. 25, 2012)
 Valid 8 a.m. EDT



Drought Conditions (Percent Area)

	None	D0-D4	D1-D4	D2-D4	D3-D4	D4
Current	10.97	89.03	82.93	48.90	5.26	0.00
Last Week <i>10-18-2012</i>	8.17	91.83	83.92	48.90	5.26	0.00
3 Months Ago <i>07-26-2012</i>	0.00	100.00	95.47	63.42	18.72	0.00
Start of Calendar Year <i>01-05-2012</i>	1.79	98.21	95.50	86.56	49.92	26.59
Start of Water Year <i>09-27-2012</i>	1.09	98.91	87.07	54.06	9.98	0.00
One Year Ago <i>10-27-2011</i>	0.08	99.92	98.23	93.27	75.76	40.26

Intensity:



The Drought Monitor focuses on broad-scale conditions. Local conditions may vary. For more information on the Drought Monitor, go to <https://droughtmonitor.unl.edu/About.aspx>

Author:

Brad Rippey
 U.S. Department of Agriculture



droughtmonitor.unl.edu