

U.S. Drought Monitor

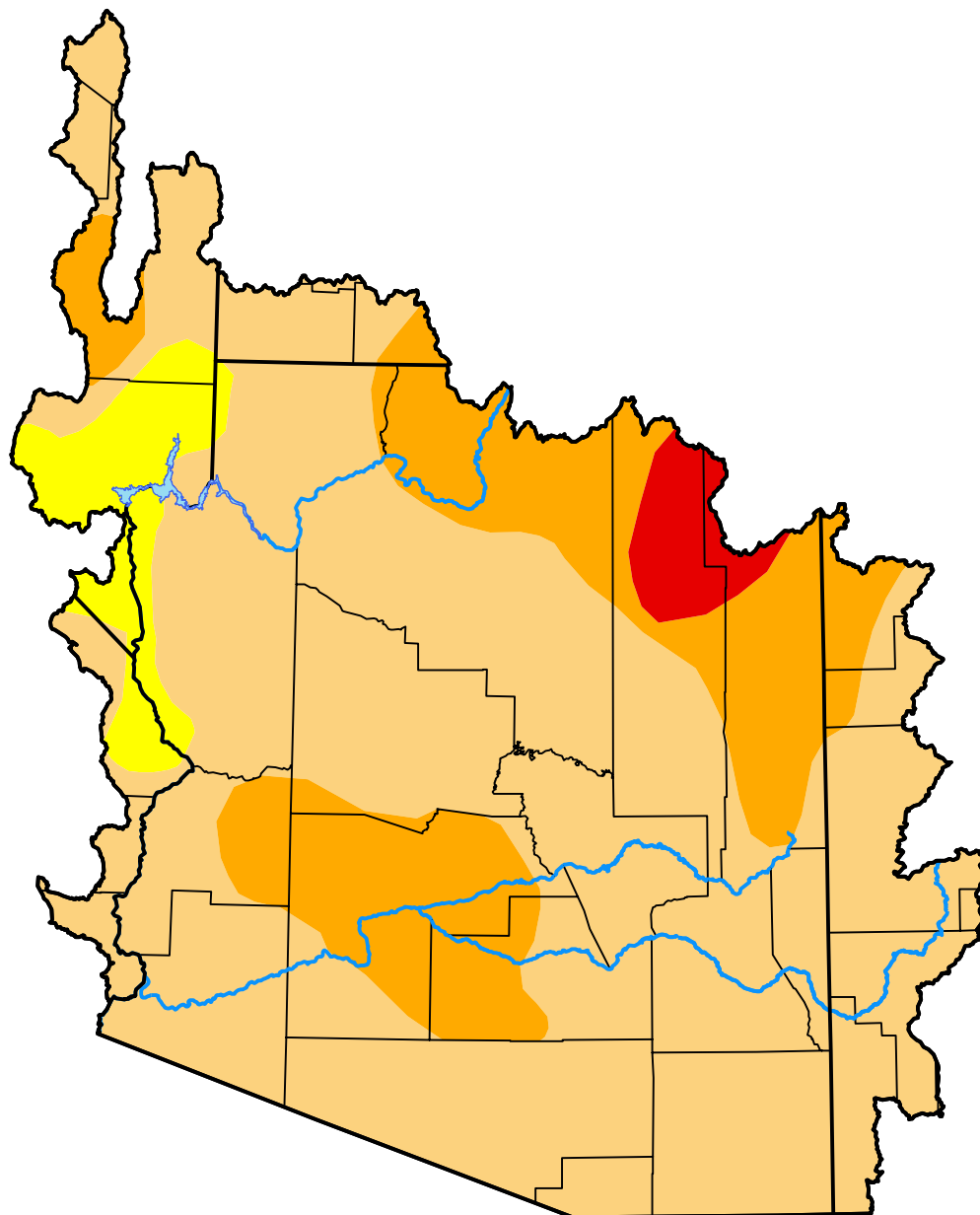
Lower Colorado Watershed

October 23, 2012
(Released Thursday, Oct. 25, 2012)

Valid 8 a.m. EDT

Drought Conditions (Percent Area)

	None	D0	D1	D2	D3	D4
Current	0.00	5.42	71.16	20.99	2.42	0.00
Last Week <i>10-18-2012</i>	0.00	5.42	71.16	20.99	2.42	0.00
3 Months Ago <i>07-26-2012</i>	0.00	0.00	7.32	75.65	17.03	0.00
Start of Calendar Year <i>01-05-2012</i>	25.39	21.58	24.39	26.38	2.26	0.00
Start of Water Year <i>09-27-2012</i>	0.00	0.52	74.53	22.53	2.42	0.00
One Year Ago <i>10-27-2011</i>	11.45	28.69	20.28	21.98	14.35	3.26



Intensity:

- None
- D0 Abnormally Dry
- D1 Moderate Drought
- D2 Severe Drought
- D3 Extreme Drought
- D4 Exceptional Drought

The Drought Monitor focuses on broad-scale conditions. Local conditions may vary. For more information on the Drought Monitor, go to <https://droughtmonitor.unl.edu/About.aspx>

Author:

Brad Rippey
 U.S. Department of Agriculture



droughtmonitor.unl.edu