

U.S. Drought Monitor

Pacific Northwest Watershed

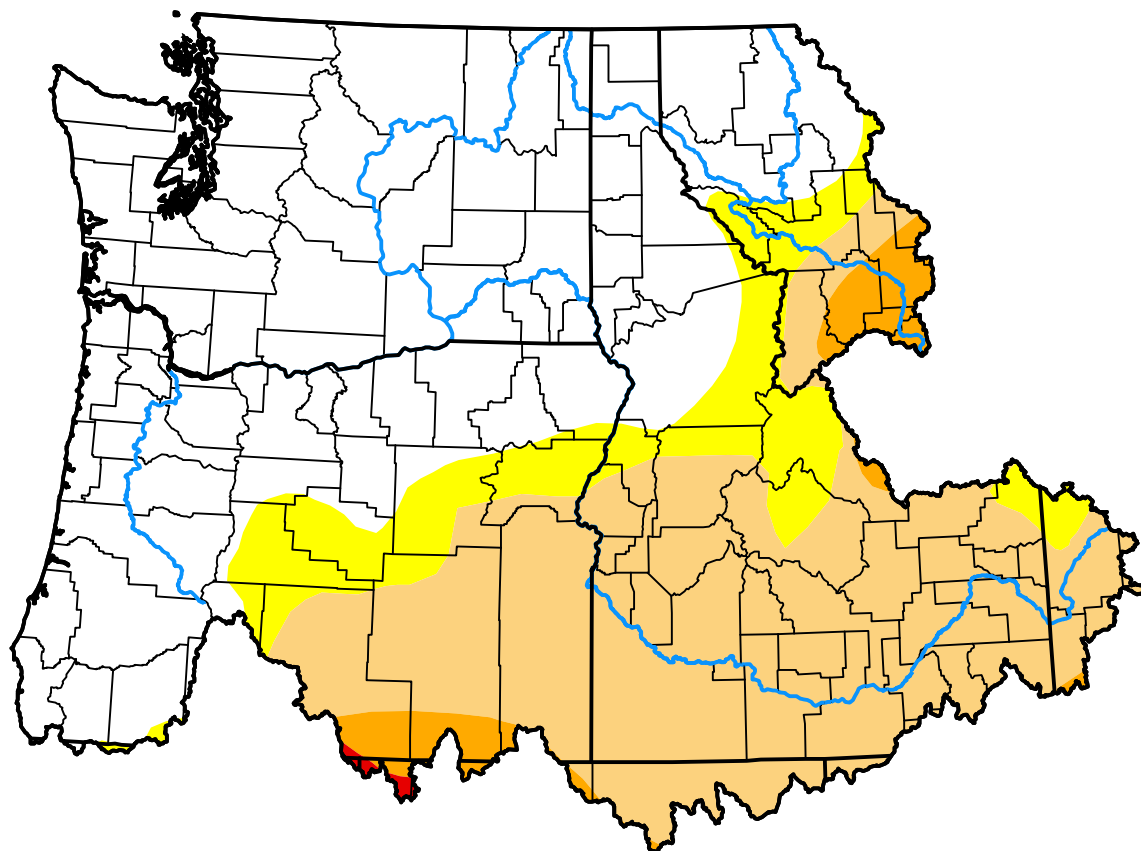
October 23, 2012

(Released Thursday, Oct. 25, 2012)

Valid 8 a.m. EDT

Drought Conditions (Percent Area)

	None	D0	D1	D2	D3	D4
Current	54.19	10.74	31.92	3.00	0.16	0.00
Last Week 10-18-2012	50.75	14.09	33.48	1.53	0.16	0.00
3 Months Ago 07-26-2012	65.53	20.97	13.04	0.46	0.00	0.00
Start of Calendar Year 01-05-2012	53.75	39.19	7.06	0.00	0.00	0.00
Start of Water Year 09-27-2012	52.78	12.67	32.89	1.39	0.27	0.00
One Year Ago 10-27-2011	98.40	1.60	0.00	0.00	0.00	0.00



Intensity:

None	D2 Severe Drought
D0 Abnormally Dry	D3 Extreme Drought
D1 Moderate Drought	D4 Exceptional Drought

The Drought Monitor focuses on broad-scale conditions. Local conditions may vary. For more information on the Drought Monitor, go to <https://droughtmonitor.unl.edu/About.aspx>

Author:

Brad Rippey
U.S. Department of Agriculture



droughtmonitor.unl.edu