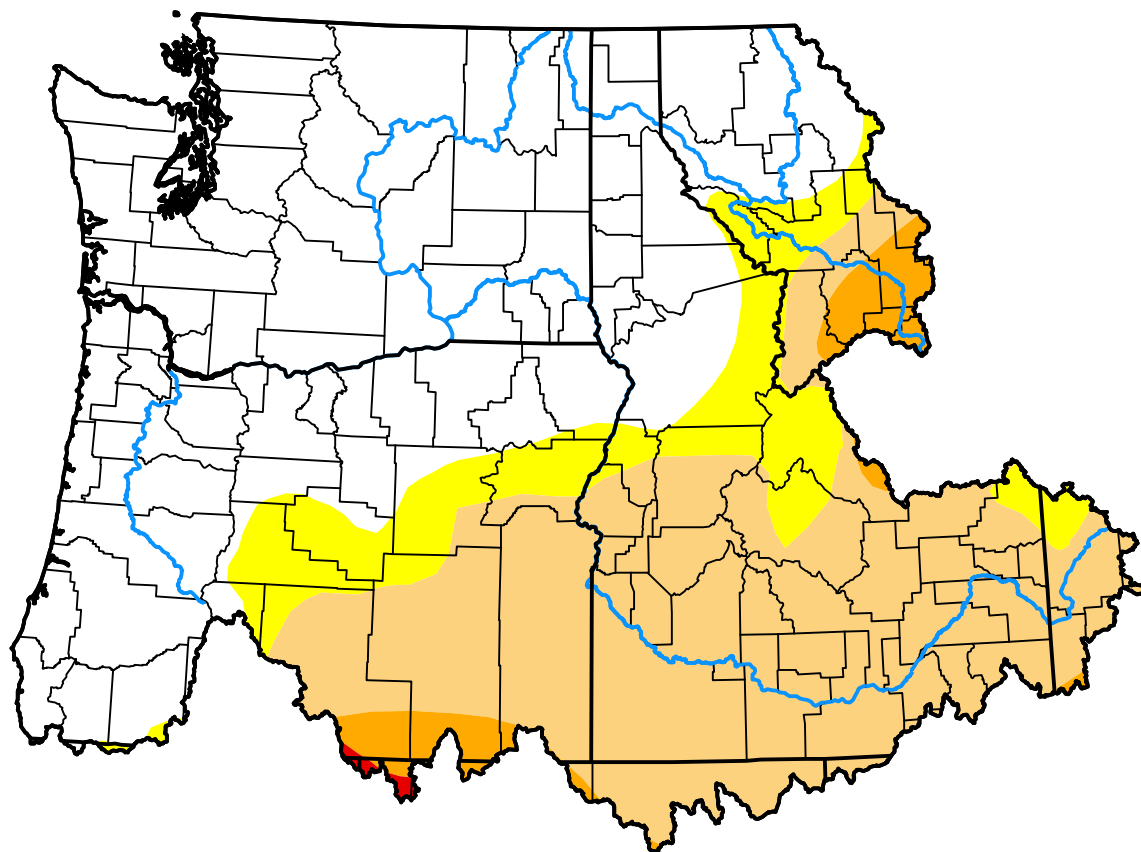


# U.S. Drought Monitor

## Pacific Northwest Watershed

**October 23, 2012**  
 (Released Thursday, Oct. 25, 2012)  
 Valid 8 a.m. EDT



*Drought Conditions (Percent Area)*

	None	D0-D4	D1-D4	D2-D4	D3-D4	D4
<b>Current</b>	54.19	45.81	35.08	3.16	0.16	0.00
<b>Last Week</b> 10-18-2012	50.75	49.25	35.16	1.69	0.16	0.00
<b>3 Months Ago</b> 07-26-2012	65.53	34.47	13.50	0.46	0.00	0.00
<b>Start of Calendar Year</b> 01-05-2012	53.75	46.25	7.06	0.00	0.00	0.00
<b>Start of Water Year</b> 09-27-2012	52.78	47.22	34.55	1.66	0.27	0.00
<b>One Year Ago</b> 10-27-2011	98.40	1.60	0.00	0.00	0.00	0.00

**Intensity:**

None	D2 Severe Drought
D0 Abnormally Dry	D3 Extreme Drought
D1 Moderate Drought	D4 Exceptional Drought

*The Drought Monitor focuses on broad-scale conditions. Local conditions may vary. For more information on the Drought Monitor, go to <https://droughtmonitor.unl.edu/About.aspx>*

**Author:**

Brad Rippey  
 U.S. Department of Agriculture



**droughtmonitor.unl.edu**