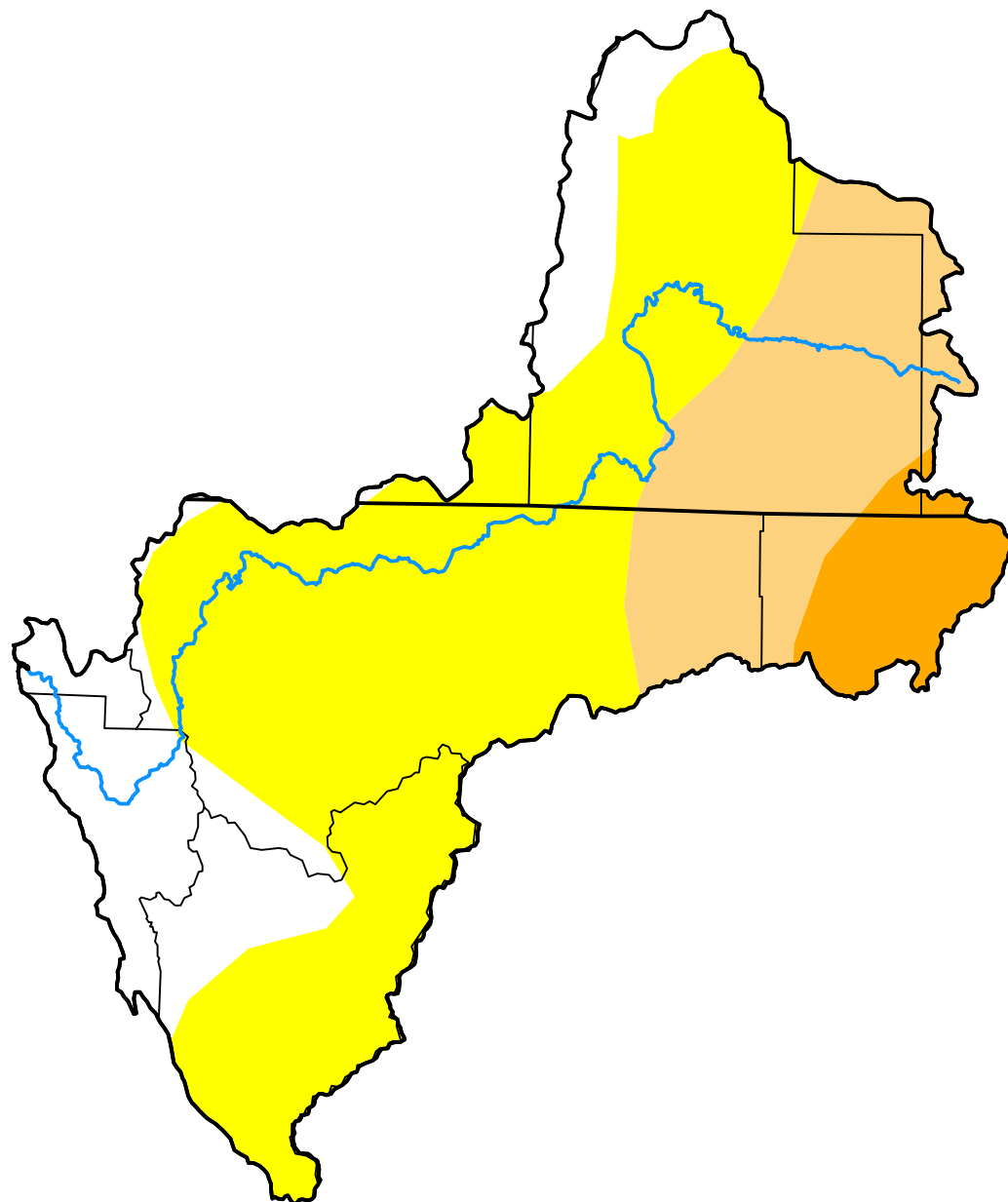


U.S. Drought Monitor Klamath River Basin

October 23, 2012
(Released Thursday, Oct. 25, 2012)
Valid 8 a.m. EDT



Drought Conditions (Percent Area)

	None	D0-D4	D1-D4	D2-D4	D3-D4	D4
Current	18.68	81.32	27.11	6.38	0.00	0.00
Last Week <i>10-16-2012</i>	18.40	81.60	27.20	6.38	0.00	0.00
3 Months Ago <i>07-24-2012</i>	46.34	53.66	29.19	7.54	0.00	0.00
Start of Calendar Year <i>01-03-2012</i>	0.00	100.00	49.37	0.00	0.00	0.00
Start of Water Year <i>09-25-2012</i>	47.37	52.63	28.92	7.22	0.00	0.00
One Year Ago <i>10-25-2011</i>	97.40	2.60	0.00	0.00	0.00	0.00

Intensity:

None	D2 Severe Drought
D0 Abnormally Dry	D3 Extreme Drought
D1 Moderate Drought	D4 Exceptional Drought

The Drought Monitor focuses on broad-scale conditions. Local conditions may vary. For more information on the Drought Monitor, go to <https://droughtmonitor.unl.edu/About.aspx>

Author:

Brad Rippey
U.S. Department of Agriculture



droughtmonitor.unl.edu