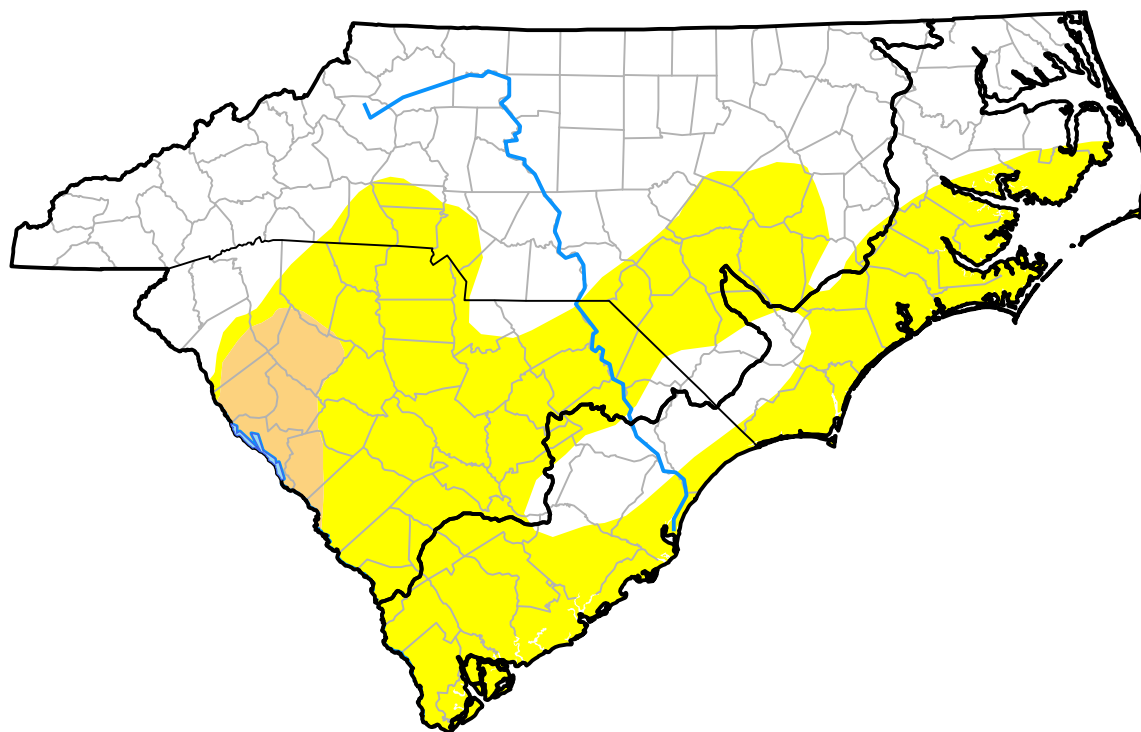


# Carolinas RDEWS and Surrounding Areas

(Released Thursday, Oct. 25, 2012)

10:00 a.m. EDT



Drought Conditions (Percent Area)

	None	D0	D1	D2	D3	D4
<b>Current</b>	51.72	44.58	3.70	0.00	0.00	0.00
<b>Last Week</b> 10-18-2012	53.82	42.48	3.70	0.00	0.00	0.00
<b>3 Months Ago</b> 07-26-2012	49.33	21.79	20.27	7.26	1.33	0.02
<b>Start of Calendar Year</b> 01-05-2012	33.03	17.51	33.42	7.06	8.98	0.00
<b>Start of Water Year</b> 09-27-2012	67.06	28.49	4.45	0.00	0.00	0.00
<b>One Year Ago</b> 10-27-2011	40.29	18.42	23.62	6.53	11.14	0.00

Intensity:

None	D2 Severe Drought
D0 Abnormally Dry	D3 Extreme Drought
D1 Moderate Drought	D4 Exceptional Drought

The Drought Monitor focuses on broad-scale conditions. Local conditions may vary. For more information on the Drought Monitor, go to <https://droughtmonitor.unl.edu/About.aspx>

Author:

Brad Rippey  
U.S. Department of Agriculture

