

U.S. Drought Monitor

Missouri River Basin RDEWS

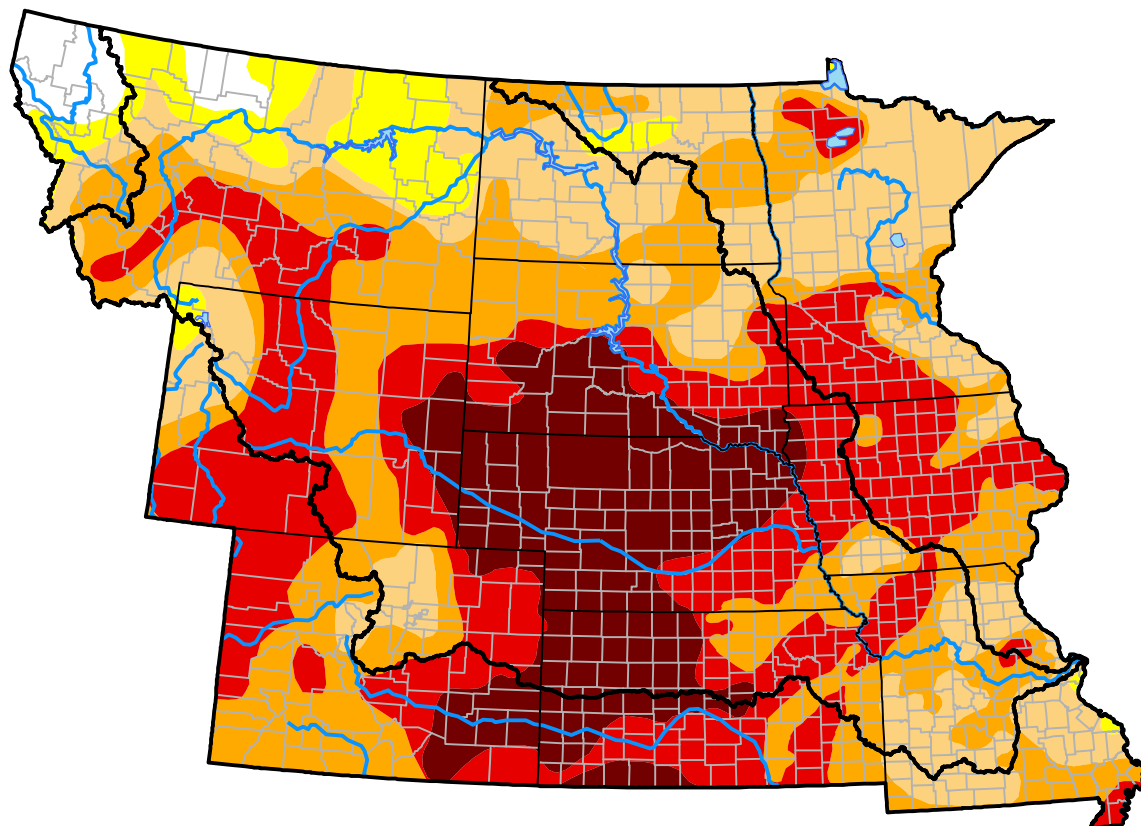
October 23, 2012

(Released Thursday, Oct. 25, 2012)

Valid 8 a.m. EDT

Drought Conditions (Percent Area)

	None	D0-D4	D1-D4	D2-D4	D3-D4	D4
Current	1.30	98.70	91.64	73.99	46.56	22.74
Last Week <i>10-18-2012</i>	1.27	98.73	91.58	73.15	44.25	22.74
3 Months Ago <i>07-26-2012</i>	9.00	91.00	77.64	64.81	29.27	1.02
Start of Calendar Year <i>01-05-2012</i>	74.43	25.57	6.50	1.97	0.00	0.00
Start of Water Year <i>09-27-2012</i>	2.91	97.09	91.77	73.25	46.91	18.49
One Year Ago <i>10-27-2011</i>	77.68	22.32	9.46	2.16	0.02	0.00



Intensity:

None	D2 Severe Drought
D0 Abnormally Dry	D3 Extreme Drought
D1 Moderate Drought	D4 Exceptional Drought

The Drought Monitor focuses on broad-scale conditions. Local conditions may vary. For more information on the Drought Monitor, go to <https://droughtmonitor.unl.edu/About.aspx>

Author:

Brad Rippey
U.S. Department of Agriculture



droughtmonitor.unl.edu