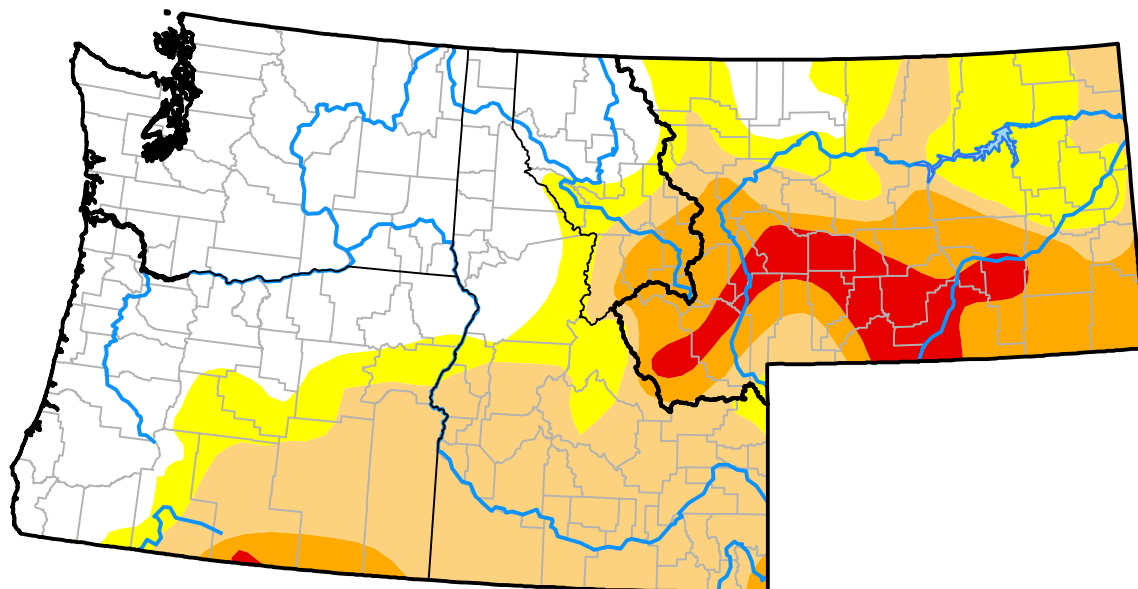


Northwest RDEWS and Surrounding Areas

Drought Conditions (Percent Area)

	None	D0-D4	D1-D4	D2-D4	D3-D4	D4
Current	39.46	60.54	43.98	16.29	4.84	0.00
Last Week 10-18-2012	37.04	62.96	43.85	12.74	1.61	0.00
3 Months Ago 07-26-2012	54.93	45.07	22.55	6.76	0.00	0.00
Start of Calendar Year 01-05-2012	65.18	34.82	5.41	0.00	0.00	0.00
Start of Water Year 09-27-2012	40.62	59.38	44.35	12.15	1.69	0.00
One Year Ago 10-27-2011	97.69	2.31	0.00	0.00	0.00	0.00



Intensity:

None	D2 Severe Drought
D0 Abnormally Dry	D3 Extreme Drought
D1 Moderate Drought	D4 Exceptional Drought

The Drought Monitor focuses on broad-scale conditions. Local conditions may vary. For more information on the Drought Monitor, go to <https://droughtmonitor.unl.edu/About.aspx>

Author:

Brad Rippey
U.S. Department of Agriculture

