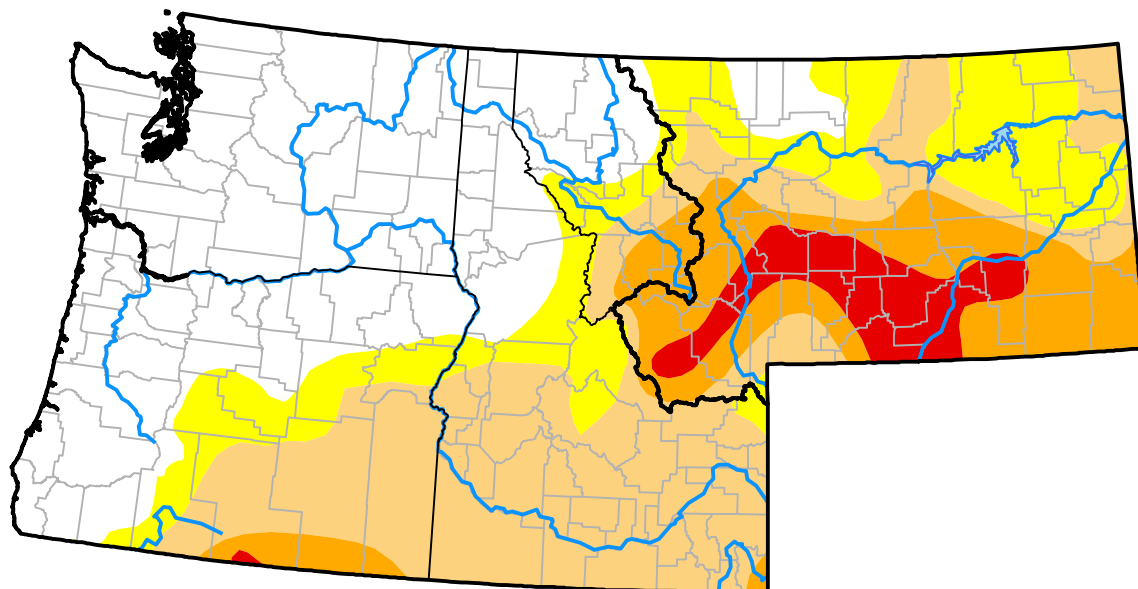


U.S. Drought Monitor

Pacific Northwest RDEWS

October 23, 2012
(Released Thursday, Oct. 25, 2012)
 Valid 8 a.m. EDT



Drought Conditions (Percent Area)

	None	D0-D4	D1-D4	D2-D4	D3-D4	D4
Current	54.66	45.34	34.02	3.47	0.08	0.00
Last Week <i>10-18-2012</i>	51.22	48.78	34.06	1.99	0.08	0.00
3 Months Ago <i>07-26-2012</i>	66.09	33.91	13.53	0.43	0.00	0.00
Start of Calendar Year <i>01-05-2012</i>	53.17	46.83	7.83	0.00	0.00	0.00
Start of Water Year <i>09-27-2012</i>	53.33	46.67	33.48	1.87	0.19	0.00
One Year Ago <i>10-27-2011</i>	98.04	1.96	0.00	0.00	0.00	0.00

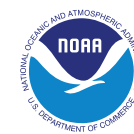
Intensity:

None	D2 Severe Drought
D0 Abnormally Dry	D3 Extreme Drought
D1 Moderate Drought	D4 Exceptional Drought

The Drought Monitor focuses on broad-scale conditions. Local conditions may vary. For more information on the Drought Monitor, go to <https://droughtmonitor.unl.edu/About.aspx>

Author:

Brad Rippey
 U.S. Department of Agriculture



droughtmonitor.unl.edu