

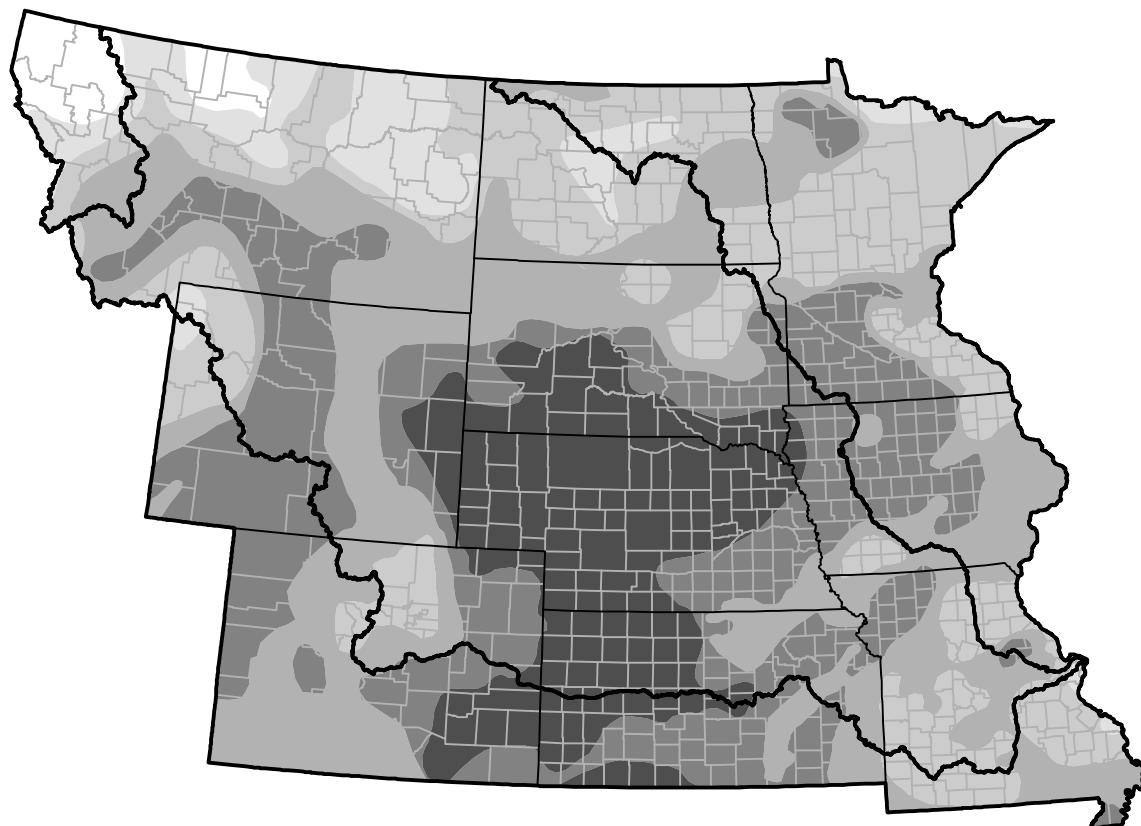
# U.S. Drought Monitor

## Missouri River Basin RDEWS

**October 30, 2012**  
 (Released Thursday, Nov. 1, 2012)  
 Valid 8 a.m. EDT

### Drought Conditions (Percent Area)

	None	D0-D4	D1-D4	D2-D4	D3-D4	D4
<b>Current</b>	1.31	98.69	90.90	73.43	46.09	22.74
<b>Last Week</b> <i>10-25-2012</i>	1.30	98.70	91.64	73.99	46.56	22.74
<b>3 Months Ago</b> <i>08-02-2012</i>	5.17	94.83	77.89	65.45	34.09	2.13
<b>Start of Calendar Year</b> <i>01-05-2012</i>	74.43	25.57	6.50	1.97	0.00	0.00
<b>Start of Water Year</b> <i>09-27-2012</i>	2.91	97.09	91.77	73.25	46.91	18.49
<b>One Year Ago</b> <i>11-03-2011</i>	74.10	25.90	17.24	2.94	0.36	0.00



### Intensity:



The Drought Monitor focuses on broad-scale conditions. Local conditions may vary. For more information on the Drought Monitor, go to <https://droughtmonitor.unl.edu/About.aspx>

### Author:

Michael Brewer  
 NCEI/NOAA



[droughtmonitor.unl.edu](https://droughtmonitor.unl.edu)