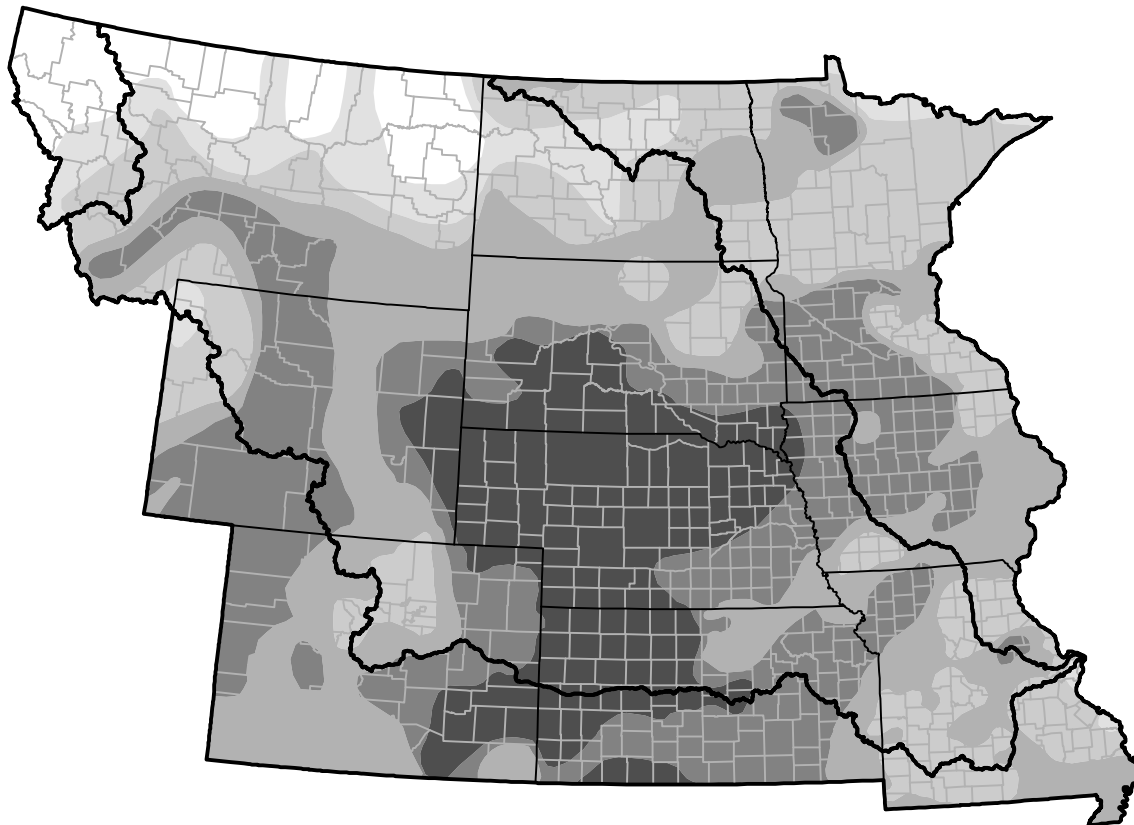


River Basin RDEWS and Surrounding Areas

Drought Conditions (Percent Area)

	None	D0	D1	D2	D3	D4
Current	5.60	6.22	19.98	26.36	25.66	16.17
Last Week <i>11-01-2012</i>	2.26	6.03	21.55	27.95	25.92	16.29
3 Months Ago <i>08-09-2012</i>	10.92	13.36	11.28	23.35	35.32	5.77
Start of Calendar Year <i>01-05-2012</i>	61.42	20.37	10.58	6.42	1.20	0.02
Start of Water Year <i>09-27-2012</i>	3.37	5.83	19.88	26.77	29.67	14.47
One Year Ago <i>11-10-2011</i>	57.79	16.46	14.75	7.36	2.11	1.52



Intensity:

- None
- D0 Abnormally Dry
- D1 Moderate Drought
- D2 Severe Drought
- D3 Extreme Drought
- D4 Exceptional Drought

The Drought Monitor focuses on broad-scale conditions. Local conditions may vary. For more information on the Drought Monitor, go to <https://droughtmonitor.unl.edu/About.aspx>

Author:

David Miskus
NOAA/NWS/NCEP/CPC

