

U.S. Drought Monitor

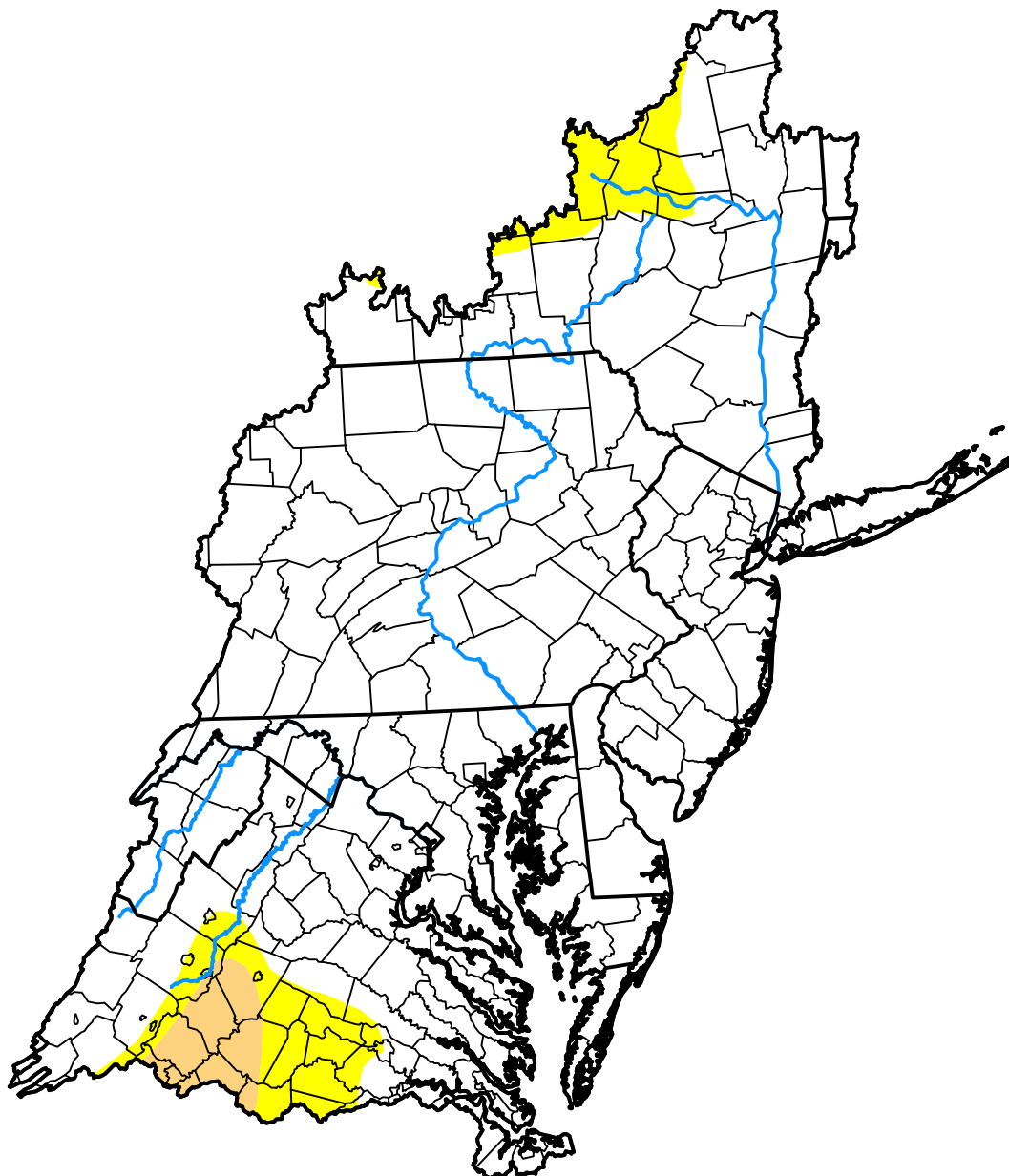
Mid Atlantic Watershed

November 13, 2012
 (Released Thursday, Nov. 15, 2012)

Valid 7 a.m. EST

Drought Conditions (Percent Area)

	None	D0	D1	D2	D3	D4
Current	90.94	6.80	2.27	0.00	0.00	0.00
Last Week <i>11-08-2012</i>	91.91	6.09	2.00	0.00	0.00	0.00
3 Months Ago <i>08-16-2012</i>	47.23	34.19	14.13	4.45	0.00	0.00
Start of Calendar Year <i>01-05-2012</i>	97.80	2.20	0.00	0.00	0.00	0.00
Start of Water Year <i>09-27-2012</i>	71.71	16.33	10.99	0.97	0.00	0.00
One Year Ago <i>11-17-2011</i>	100.00	0.00	0.00	0.00	0.00	0.00



Intensity:

- None
- D0 Abnormally Dry
- D1 Moderate Drought
- D2 Severe Drought
- D3 Extreme Drought
- D4 Exceptional Drought

The Drought Monitor focuses on broad-scale conditions. Local conditions may vary. For more information on the Drought Monitor, go to <https://droughtmonitor.unl.edu/About.aspx>

Author:

David Miskus
 NOAA/NWS/NCEP/CPC



droughtmonitor.unl.edu