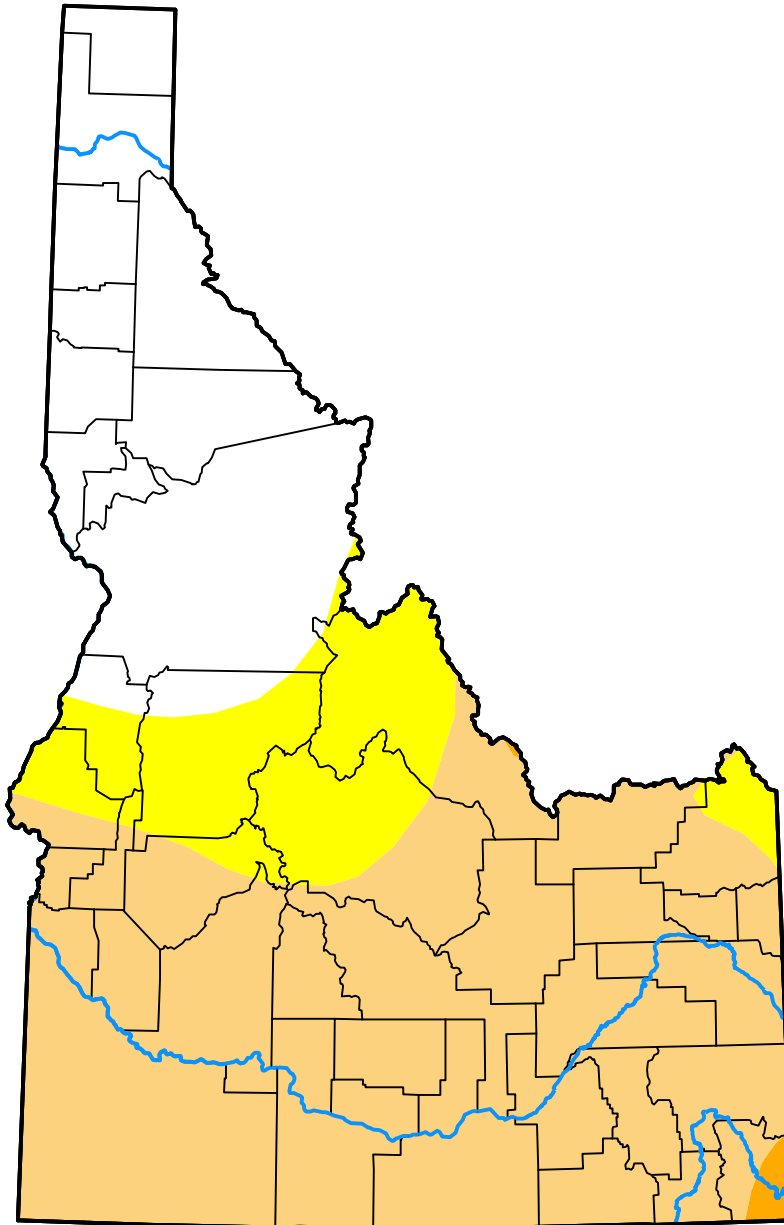


U.S. Drought Monitor

Idaho

November 13, 2012
 (Released Thursday, Nov. 15, 2012)
 Valid 7 a.m. EST



Drought Conditions (Percent Area)

	None	D0	D1	D2	D3	D4
Current	26.83	14.60	58.02	0.54	0.00	0.00
Last Week <i>11-08-2012</i>	24.28	17.15	57.67	0.91	0.00	0.00
3 Months Ago <i>08-16-2012</i>	25.77	56.37	17.68	0.18	0.00	0.00
Start of Calendar Year <i>01-05-2012</i>	70.75	29.25	0.00	0.00	0.00	0.00
Start of Water Year <i>09-27-2012</i>	15.61	17.92	65.21	1.27	0.00	0.00
One Year Ago <i>11-17-2011</i>	97.88	2.12	0.00	0.00	0.00	0.00

Intensity:



The Drought Monitor focuses on broad-scale conditions. Local conditions may vary. For more information on the Drought Monitor, go to <https://droughtmonitor.unl.edu/About.aspx>

Author:

David Miskus
 NOAA/NWS/NCEP/CPC



droughtmonitor.unl.edu