

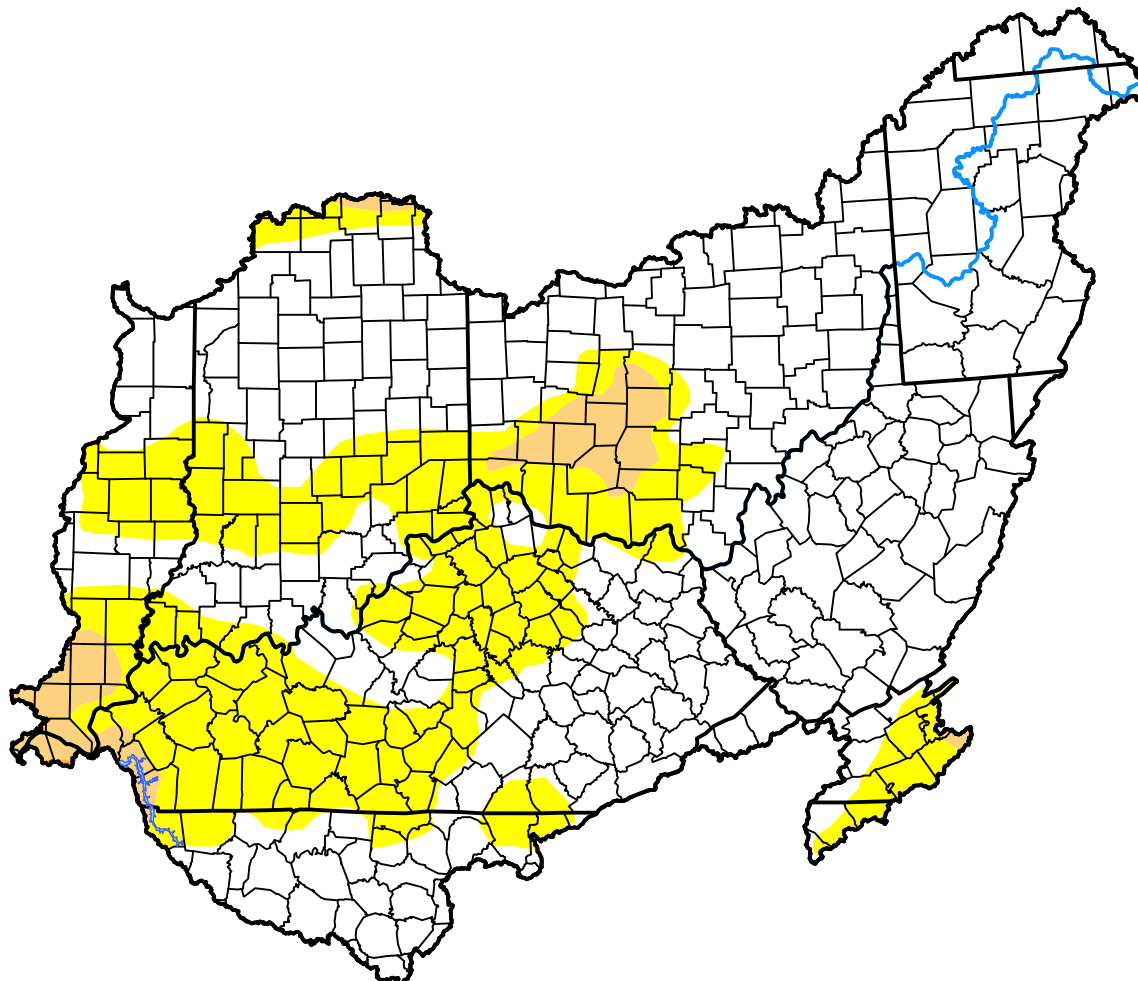
U.S. Drought Monitor Ohio Watershed

November 20, 2012
(Released Thursday, Nov. 22, 2012)

Valid 7 a.m. EST

Drought Conditions (Percent Area)

	None	D0	D1	D2	D3	D4
Current	68.36	27.72	3.91	0.02	0.00	0.00
Last Week <i>11-15-2012</i>	72.69	22.94	4.36	0.02	0.00	0.00
3 Months Ago <i>08-23-2012</i>	31.54	22.77	16.04	12.25	12.82	4.57
Start of Calendar Year <i>01-05-2012</i>	100.00	0.00	0.00	0.00	0.00	0.00
Start of Water Year <i>09-27-2012</i>	37.98	23.75	26.38	11.90	0.00	0.00
One Year Ago <i>11-23-2011</i>	99.74	0.26	0.00	0.00	0.00	0.00



Intensity:



The Drought Monitor focuses on broad-scale conditions. Local conditions may vary. For more information on the Drought Monitor, go to <https://droughtmonitor.unl.edu/About.aspx>

Author:

Eric Luebehusen
U.S. Department of Agriculture



droughtmonitor.unl.edu