

U.S. Drought Monitor

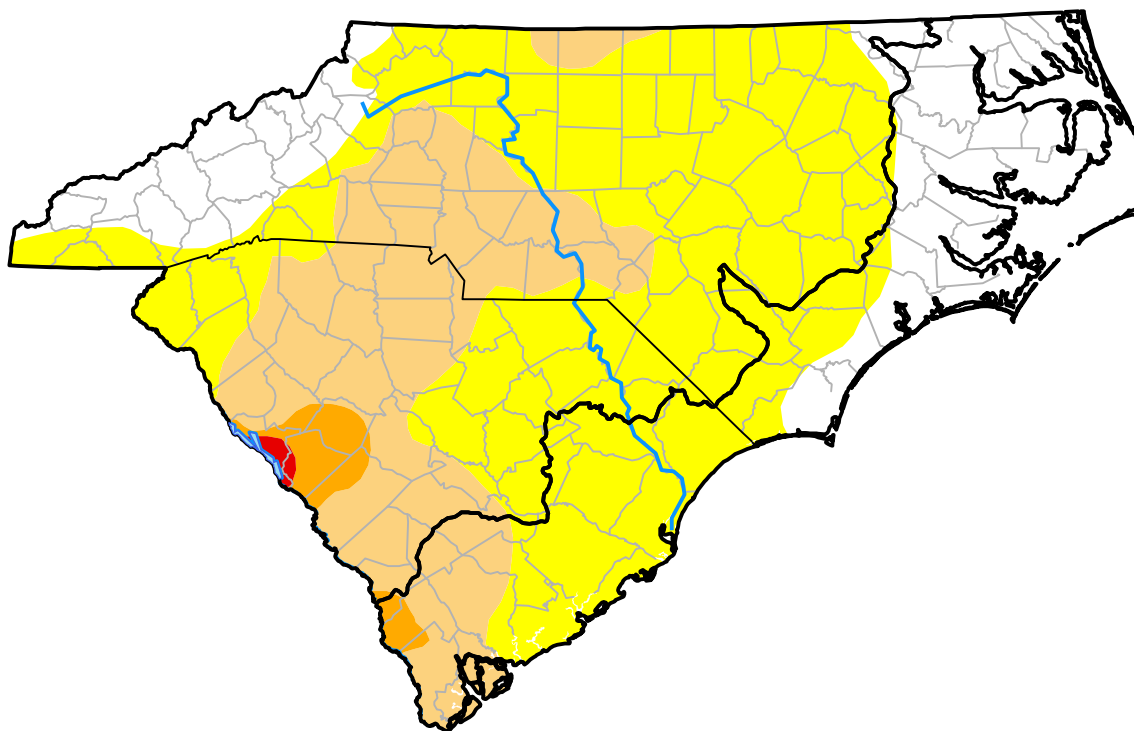
Coastal Carolinas RDEWS

November 20, 2012
(Released Thursday, Nov. 22, 2012)

Valid 7 a.m. EST

Drought Conditions (Percent Area)

	None	D0	D1	D2	D3	D4
Current	51.21	35.04	13.45	0.30	0.00	0.00
Last Week <i>11-15-2012</i>	45.88	45.92	7.90	0.30	0.00	0.00
3 Months Ago <i>08-23-2012</i>	61.15	35.77	3.08	0.00	0.00	0.00
Start of Calendar Year <i>01-05-2012</i>	0.22	18.48	62.69	6.97	11.65	0.00
Start of Water Year <i>09-27-2012</i>	81.76	18.24	0.00	0.00	0.00	0.00
One Year Ago <i>11-23-2011</i>	48.91	3.98	27.19	6.93	12.99	0.00



Intensity:



The Drought Monitor focuses on broad-scale conditions. Local conditions may vary. For more information on the Drought Monitor, go to <https://droughtmonitor.unl.edu/About.aspx>

Author:

Eric Luebehusen
 U.S. Department of Agriculture



droughtmonitor.unl.edu