

# U.S. Drought Monitor

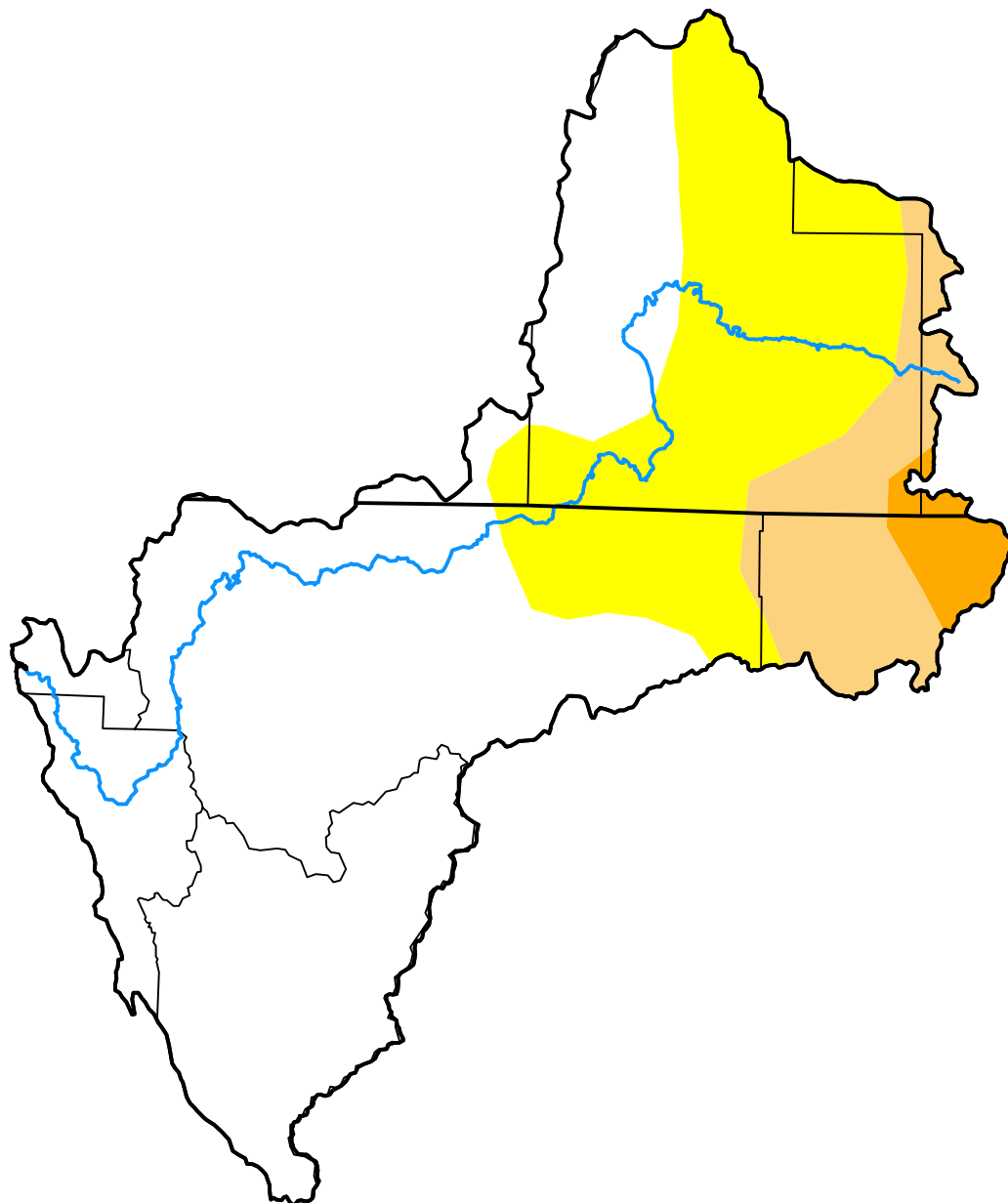
## Klamath River Basin

**January 8, 2013**  
 (Released Thursday, Jan. 10, 2013)

Valid 7 a.m. EST

*Drought Conditions (Percent Area)*

|  | None  | D0-D4  | D1-D4 | D2-D4 | D3-D4 | D4   |
|--|-------|--------|-------|-------|-------|------|
| <b>Current</b>                                     | 60.75 | 39.25  | 12.98 | 2.52  | 0.00  | 0.00 |
| <b>Last Week</b><br><i>01-01-2013</i>              | 60.82 | 39.18  | 13.13 | 2.52  | 0.00  | 0.00 |
| <b>3 Months Ago</b><br><i>10-09-2012</i>           | 16.18 | 83.82  | 27.56 | 6.37  | 0.00  | 0.00 |
| <b>Start of Calendar Year</b><br><i>01-01-2013</i> | 60.82 | 39.18  | 13.13 | 2.52  | 0.00  | 0.00 |
| <b>Start of Water Year</b><br><i>09-25-2012</i>    | 47.37 | 52.63  | 28.92 | 7.22  | 0.00  | 0.00 |
| <b>One Year Ago</b><br><i>01-10-2012</i>           | 0.00  | 100.00 | 49.37 | 0.00  | 0.00  | 0.00 |



***Intensity:***

- None
- D0 Abnormally Dry
- D1 Moderate Drought
- D2 Severe Drought
- D3 Extreme Drought
- D4 Exceptional Drought

*The Drought Monitor focuses on broad-scale conditions. Local conditions may vary. For more information on the Drought Monitor, go to <https://droughtmonitor.unl.edu/About.aspx>*

***Author:***

David Simeral  
 Western Regional Climate Center

