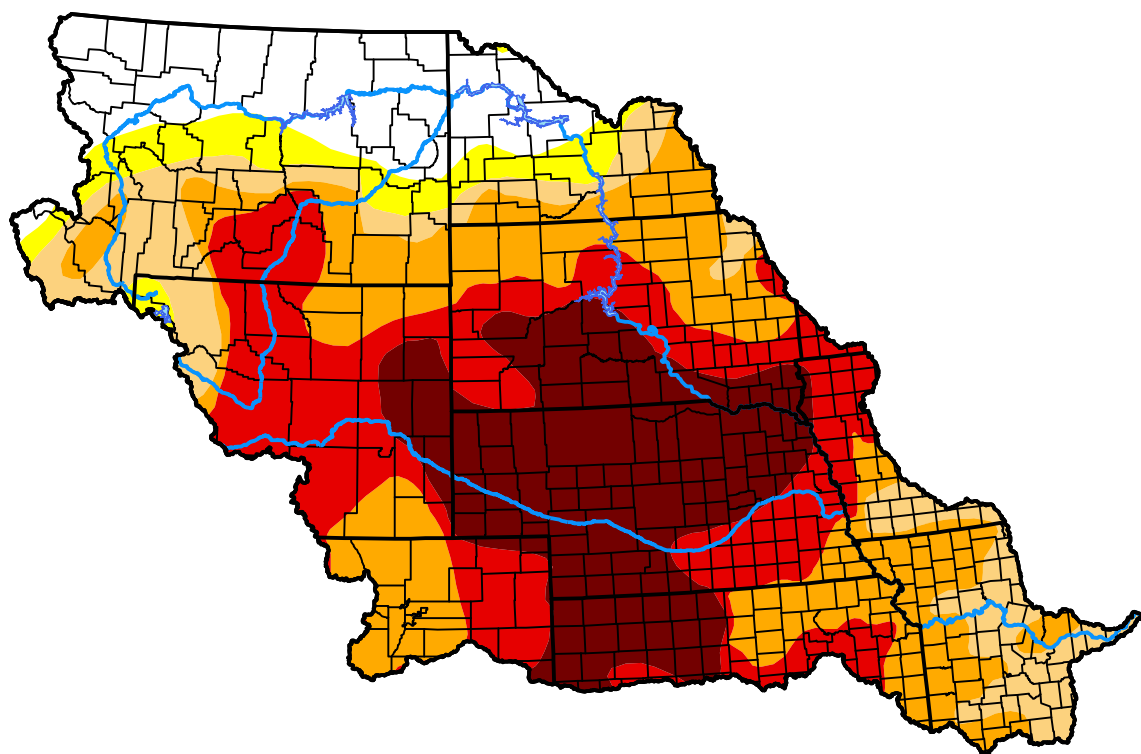


# U.S. Drought Monitor Missouri Watershed

**January 15, 2013**  
(Released Thursday, Jan. 17, 2013)  
Valid 7 a.m. EST



## Drought Conditions (Percent Area)

	None	D0-D4	D1-D4	D2-D4	D3-D4	D4
<b>Current</b>	13.21	86.79	81.39	69.88	45.34	22.11
<b>Last Week</b> <i>01-10-2013</i>	13.21	86.79	81.39	68.83	45.36	22.11
<b>3 Months Ago</b> <i>10-18-2012</i>	1.18	98.82	91.71	73.27	44.31	22.76
<b>Start of Calendar Year</b> <i>01-03-2013</i>	11.39	88.61	81.97	68.83	45.36	22.11
<b>Start of Water Year</b> <i>09-27-2012</i>	2.82	97.18	91.90	73.35	46.98	18.50
<b>One Year Ago</b> <i>01-19-2012</i>	70.74	29.26	6.90	1.98	0.00	0.00

## Intensity:

None	D2 Severe Drought
D0 Abnormally Dry	D3 Extreme Drought
D1 Moderate Drought	D4 Exceptional Drought

The Drought Monitor focuses on broad-scale conditions. Local conditions may vary. For more information on the Drought Monitor, go to <https://droughtmonitor.unl.edu/About.aspx>

## Author:

David Simeral  
Western Regional Climate Center



**droughtmonitor.unl.edu**